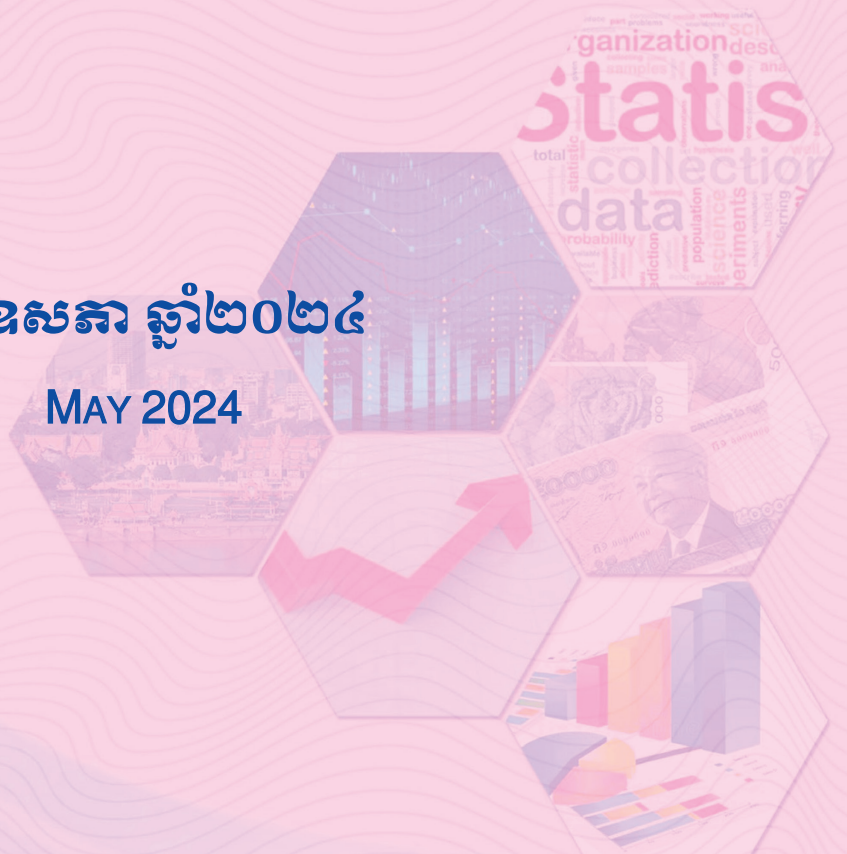




ធនាគារជាតិ នៃ កម្ពុជា
NATIONAL BANK OF CAMBODIA

ព្រឹត្តិបត្រស្ថិតិសេដ្ឋកិច្ច និងរូបិយវត្ថុ **Economic and Monetary Statistics Bulletin**

ខែឧសភា ឆ្នាំ២០២៤
MAY 2024



លេខ៣៦៧ – ឆ្នាំទី៣២

SERIES NO. 367- 32ND YEAR

Contents

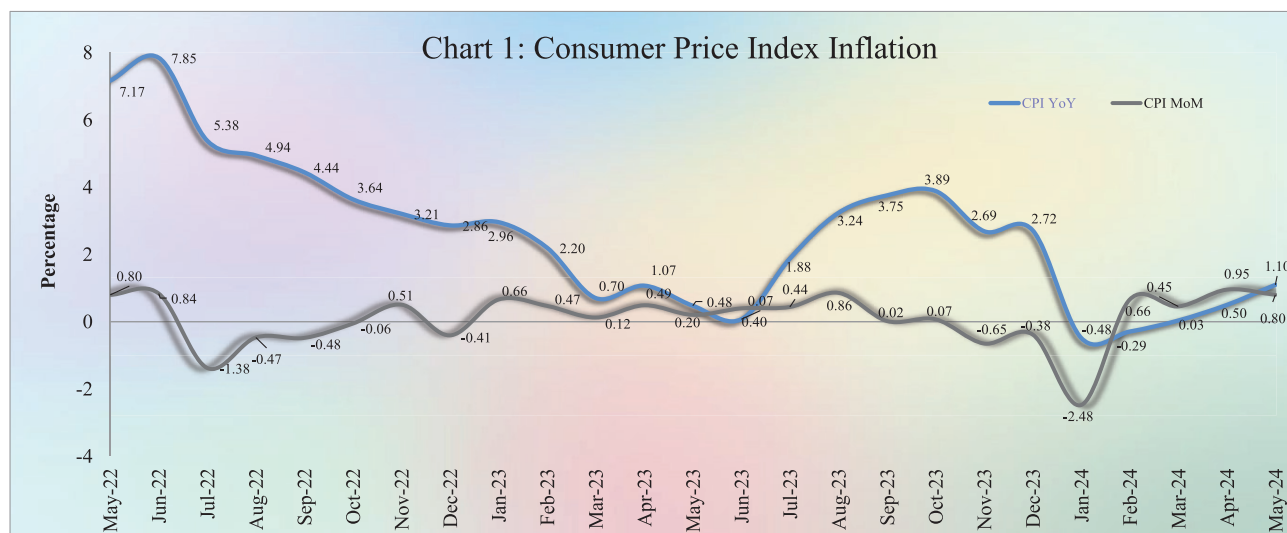
| | Page |
|---|-------|
| - Introduction..... | 1 |
| - Exchange Rate..... | 1 |
| - Money Supply..... | 1 |
| - Net Domestic Assets of the Depository Corporations..... | 2 |
| - Net Foreign Assets of the Depository Corporations..... | 2 |
| - Other Depository Corporations Survey..... | 3 |
| - Other Financial Corporations Survey..... | 3 |
| - Interest Rates on Loans and Deposits..... | 3 |
| - Foreign Tourist Arrivals..... | 4 |
| - International Trade in Goods..... | 4 |
| Table 1 : Consumer Price Index and Inflation Rate..... | 6 |
| Table 2 : Consumer Items Showing Price Increased in May 2024..... | 7 |
| Table 3 : Gross Domestic Product..... | 8 |
| Chart 1 : GDP by Economic Activity (At Constant 2014 Prices)..... | 8 |
| Chart 2 : GDP by Economic Activity (At Current Prices)..... | 8 |
| Table 4 : Residential Property Price Index..... | 9 |
| Chart 3 : RPPI Month on Month Change..... | 9 |
| Chart 4 : RPPI Year on Year Change..... | 9 |
| Table 5 : Approved Investment Projects by Sectors..... | 10 |
| Chart 5 : Investment Fixed Assets by Sectors..... | 10 |
| Chart 6 : Numbers of Investment Projects by Sectors..... | 10 |
| Table 6 : Approved Investment Projects by Major Countries..... | 11 |
| Table 7 : Daily Exchange Rate in May 2024 (KHR/USD)..... | 12 |
| Table 8 : Monthly Exchange Rate (KHR/USD, End-Period)..... | 13 |
| Chart 7 : Trend of Monthly Exchange Rate..... | 13 |
| Table 9 : The Value of KHR Against Other Currencies (Official Buying Rates, End-Period)..... | 14 |
| Table 10: Deposit Money Bank’s Interest Rates on Deposits and Loans in KHR..... | 15 |
| Table 11: Central Bank Survey..... | 16 |
| Table 12: Other Depository Corporations Survey..... | 17 |
| Table 13: Depository Corporations Survey..... | 18 |
| Table 14: Other Financial Corporations Survey..... | 19 |
| Table 15: Financial Corporations Survey..... | 20 |
| Chart 8 : Financial Corporations Survey..... | 21 |
| Chart 9 : Monetary Aggregates Components..... | 21 |
| Table 16: Credit Granted by Deposit Money Banks Classified by Industry..... | 22 |
| Chart 10: Credit Granted by Deposit Money Banks Classified by Industry..... | 22 |
| Table 17: Monthly Change of Credit Granted by Deposit Money Banks Classified by Industry..... | 23 |
| Table 18: Deposits with Deposit Money Banks..... | 24 |
| Chart 11: Deposits with Deposit Money Banks Classified by Currency, as of May 2024 (% of Total Deposits)..... | 24 |
| Table 19: Monthly Change of Deposits with Deposit Money Banks..... | 25 |
| Chart 12: Deposits in KHR Classified by Type, as of May 2024 (% of Total KHR Deposits)..... | 26 |
| Chart 13: Deposits in Foreign Currency Classified by Type, as of May 2024 (% of Total FCD)..... | 26 |
| Table 20: Credit Granted by Micro-Finance Institutions and Non-Government Organizations..... | 27 |
| Table 21: KHR-Denominated Checks Clearing Through Clearing House..... | 28 |
| Table 22: USD-Denominated Checks Clearing Through Clearing House..... | 29 |
| Table 23: Visitor Arrivals in Cambodia..... | 30 |
| Table 24: Cambodia’s Imports and Exports..... | 31 |
| Table 25: The Banking System in Cambodia..... | 32-33 |

Introduction

Headline consumer price inflation in May 2024 decelerated over the previous month, and the Khmer riel (KHR) depreciated against US dollar. During this period, residents' deposits in the banking sector continued to increase, while credit to private sector increased slightly. In the meantime, international trade in goods continued to show a deficit.

Consumer Price Index

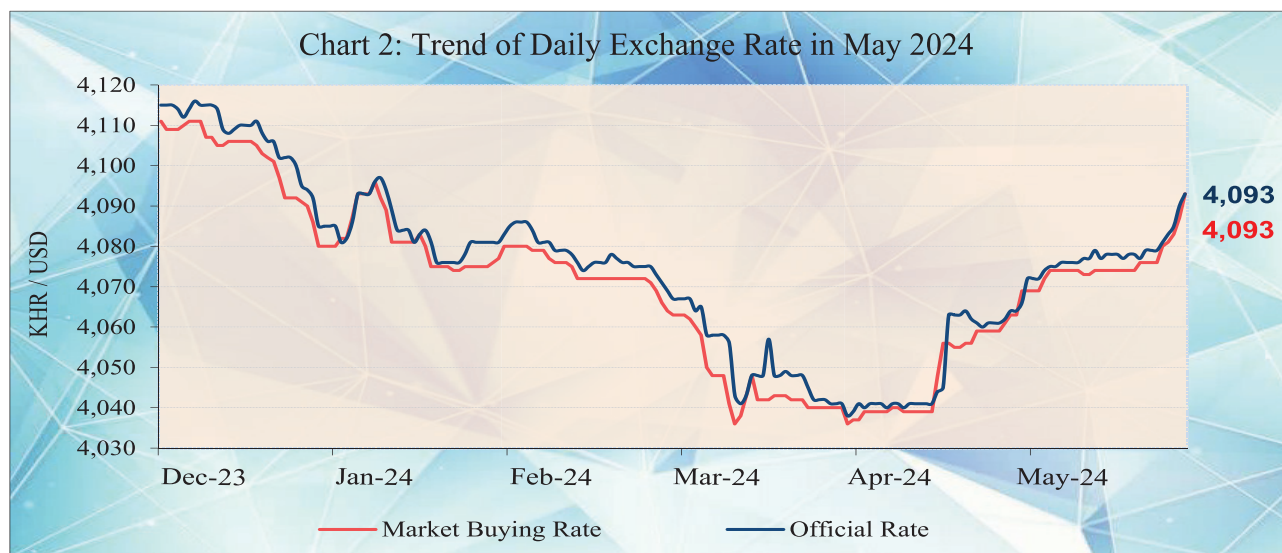
The consumer price inflation in Phnom Penh (month-on-month) subsided to 0.80% in May 2024 from 0.95% in April, in which one of the twelve group indexes decreased, while the other eleven group indexes increased.



During the same period, the year-on-year percentage change of the CPI for all items accelerated to 1.1% from 0.50% in April, which was mainly due to the increase in prices of food, restaurants, and clothing and footwear.

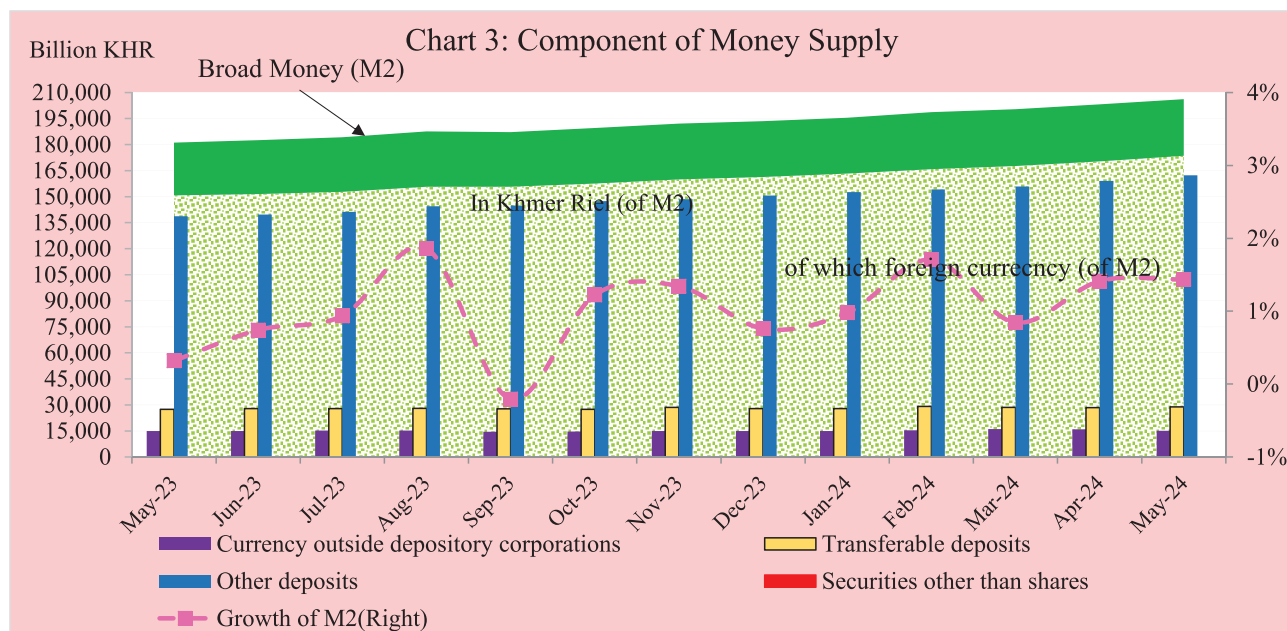
Exchange Rate

The exchange rate (market buying rate) was KHR 4,093 per USD in May 2024, depreciated by 0.74% over April.



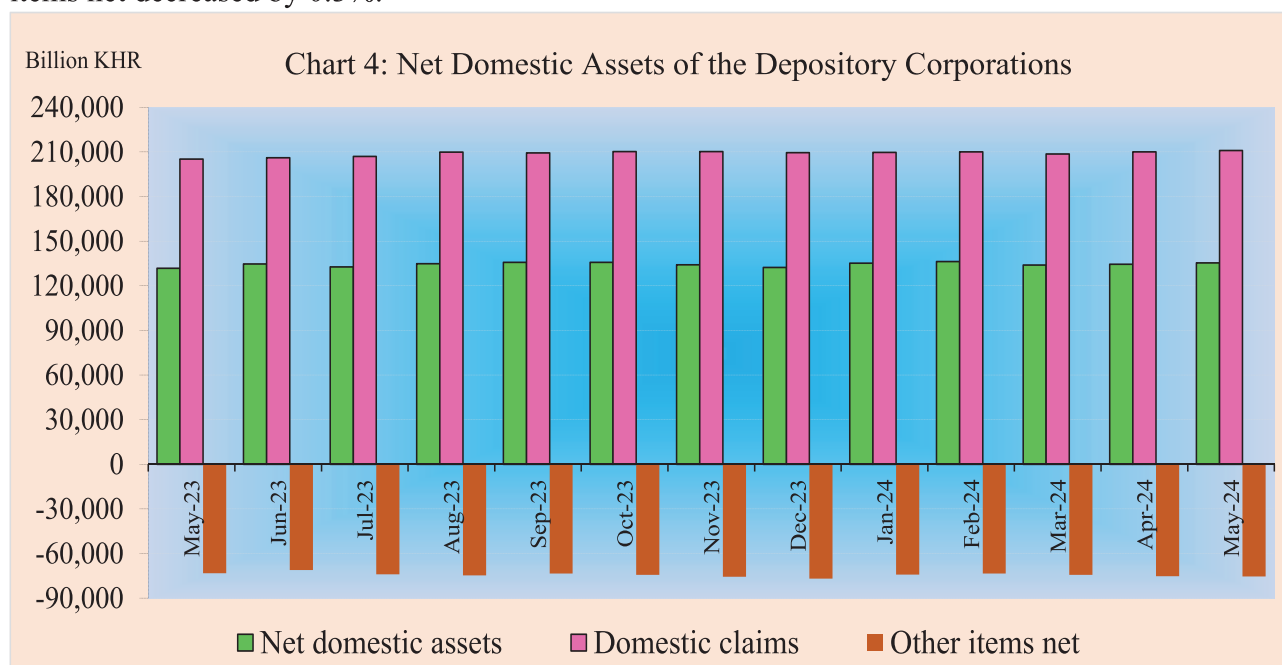
Money Supply

Broad money (M2) increased to KHR 206,188.4 billion in May 2024, rose by 1.4% compared to April. The main components of M2 showed that currency outside depository corporations decreased by 5.4%, while other deposits and transferable deposits increased by 2.1% and 1.5%, respectively.



Net Domestic Assets of the Depository Corporations

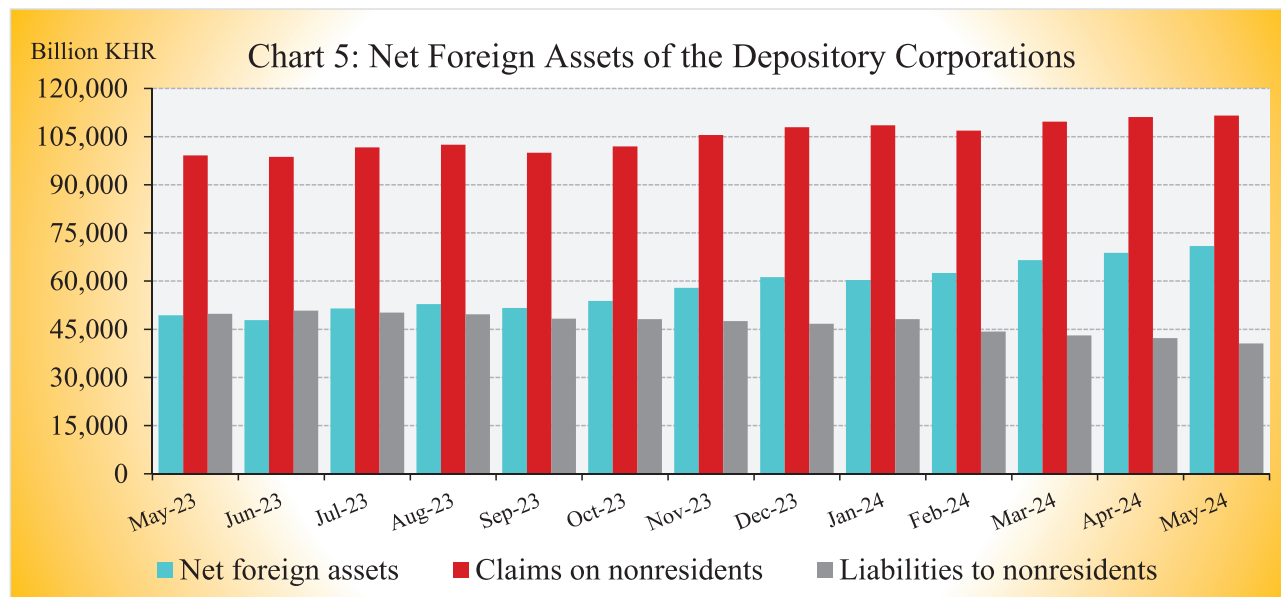
Net domestic assets of the depository corporations increased by 0.6% to KHR 135,247.7 billion in May 2024 compared to April. This was due to the increase of 0.5% in net domestic credit, while other items net decreased by 0.3%.



The increase in net domestic credit was due to the increase of 0.8% in credit to private sector, while net credit to nonfinancial public sector and net credit to other financial corporations decreased by 3.7% and 0.8%, respectively. The decrease in other items net was due to a decrease of 3.1% in others along with an increase of 0.8% in capital accounts.

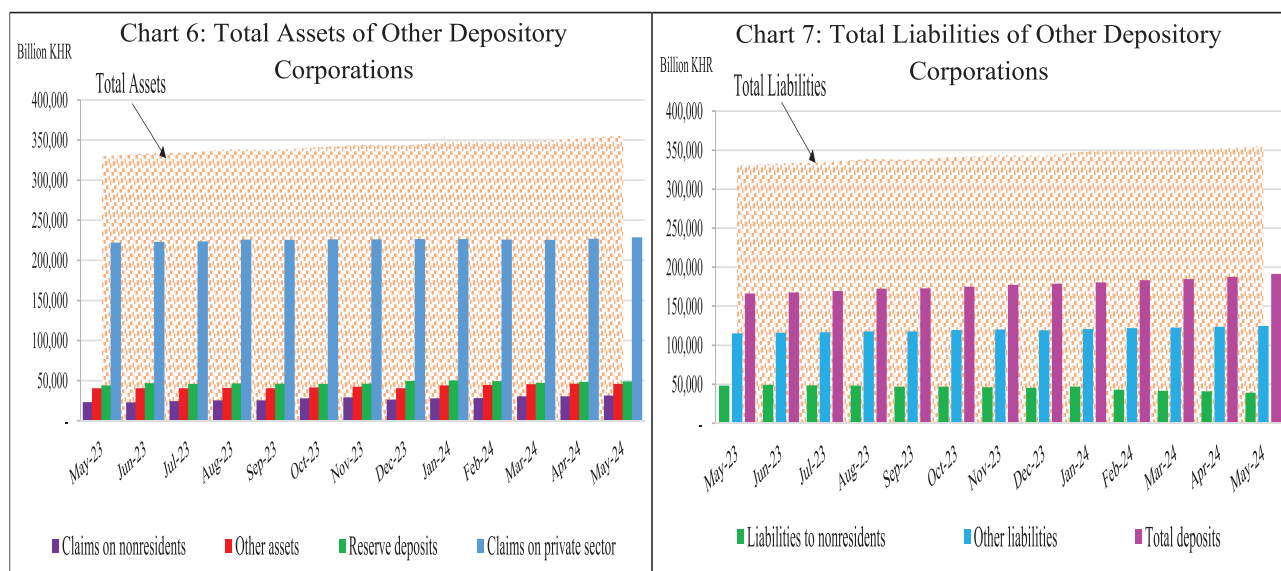
Net Foreign Assets of the Depository Corporations

Net foreign assets of the depository corporation increased to KHR 70,940.7 billion in May 2024, grew by 3.1% from April. This was due to the increase of 3.5% in other foreign assets, while foreign liabilities and gross foreign reserve declined by 3.9% and 0.8%, respectively.



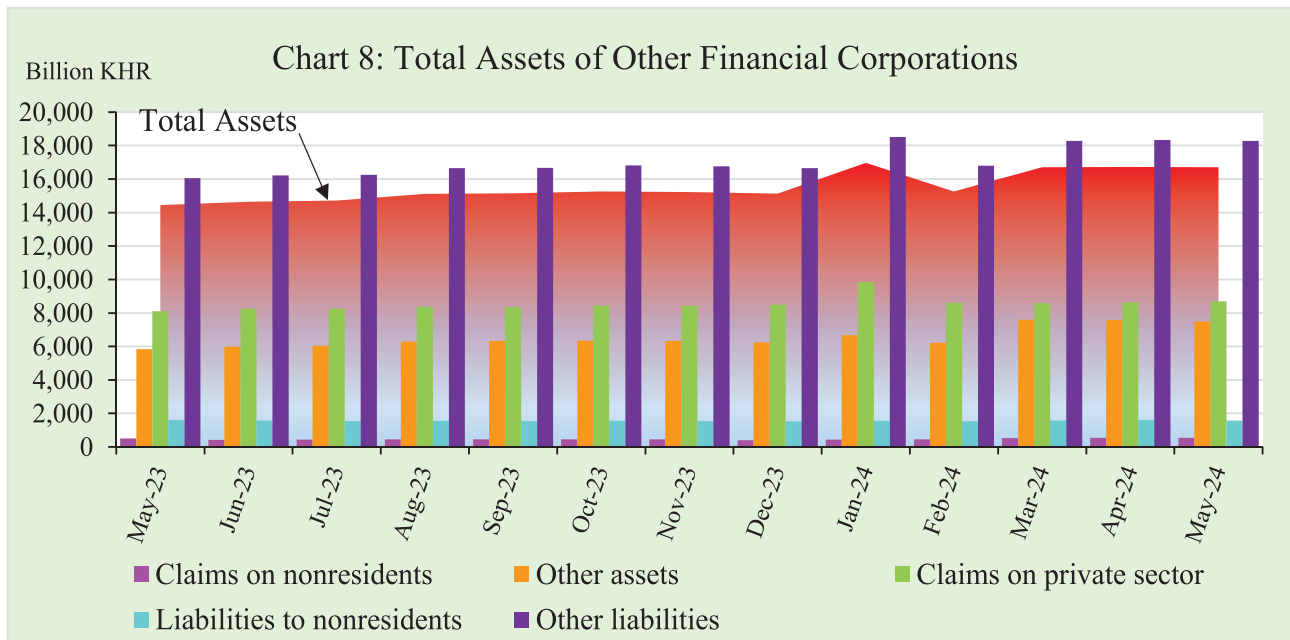
Other Depository Corporations Survey

Total assets of other depository corporations (including commercial banks and microfinance deposit-taking institutions) were KHR 355,297.5 billion, rose by 0.9% in May 2024 compared to the previous month.



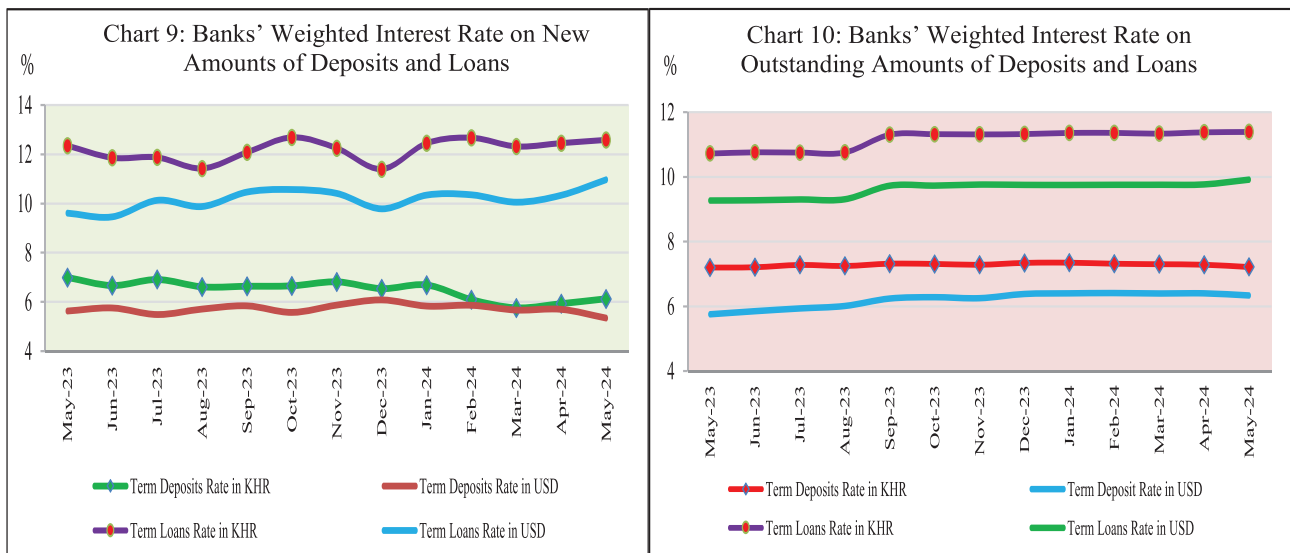
Other Financial Corporations Survey

Total assets of other financial corporations (including specialized banks, MFIs, and insurance companies) were KHR 16,711.3 billion, dropped by 0.1% in May 2024 compared to April.



Interest Rates on Deposits and Loans

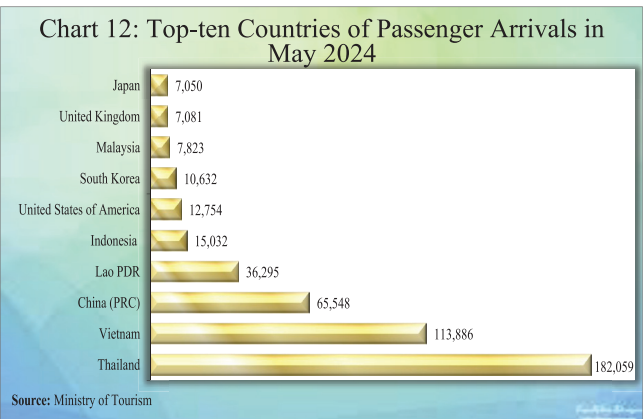
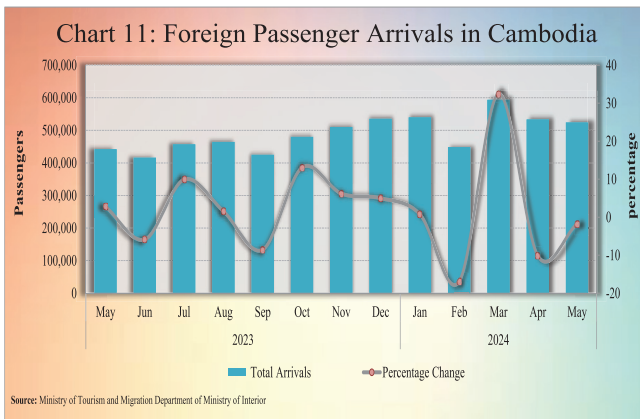
Interest rate on deposits and loans of banking sector in May 2024 showed that the (new amount) weighted average interest rate on term deposits in KHR increased by 0.2% to 6.13%, while term deposits in USD decreased by 0.35% to 5.34%. At the same time, the weighted average interest rate on term loans in KHR increased by 0.13% to 12.58%, and term loans in USD increased by 0.63% to 10.96%.



Foreign Tourist Arrivals

In May 2024, the total number of passenger arrivals was 524,390, decreased by 1.8% after the decrease of 10.1% in the previous month. The main purposes of the passenger arrivals in Cambodia were for vacation, and business and professional, which were accounted for 77% and 21.2% of the total, respectively.

Most of the foreign passengers were from Thailand, Vietnam, China P.R.C., Laos PDR, Indonesia, United States of America, South Korea, Malaysia, United Kingdom, and Japan.



International Trade in Goods

International trade in goods showed a deficit of KHR 2,056.4 billion (19.4%) in May 2024, following the deficit of KHR 2,721.1 billion (27.5%) in April.



The major components of total exports were Garment, Other Textile Products, Footwear, Electrical Part, Fish and other agricultural Products, Wood Products, Bicycle, Rice, Rubber, and Vehicle. In addition, the major components of total imports were Fabric, Oil, Vehicle, Food and Beverage, Equipment Construction, Steel, Garment, Other Electronic Equipment, Fertilizer, Medicine, Cigarette, and Gold.

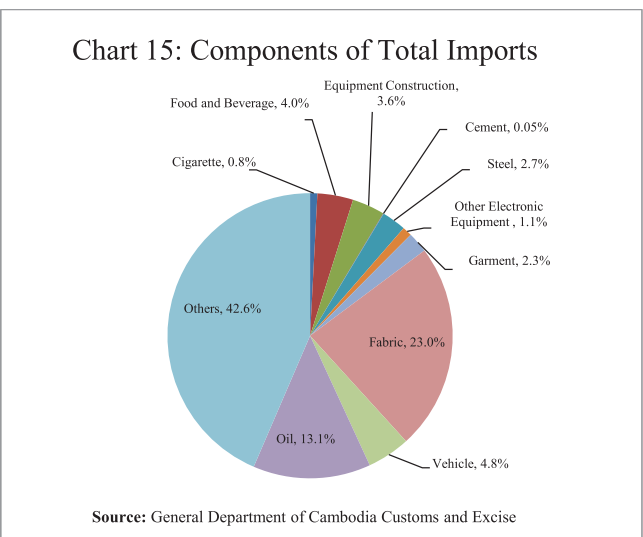
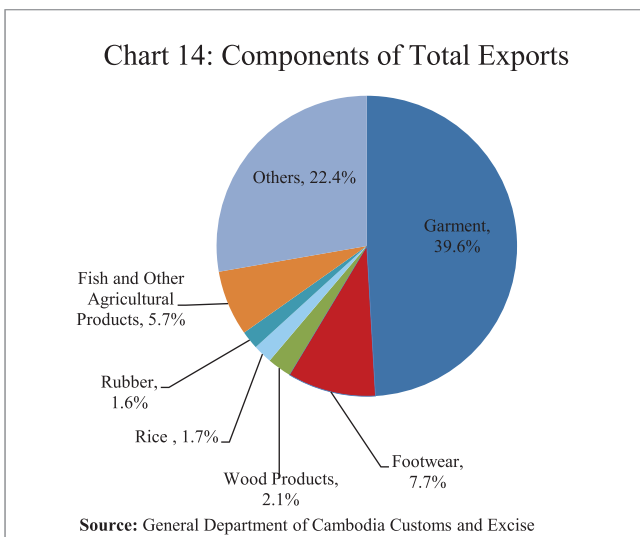


Table 1: Consumer Price Index and Inflation Rate

| 1. Consumer Price Index (CPI) and Component Indices (Oct-Dec. 2006 = 100) | Jan-24 | Feb-24 | Mar-24 | Apr-24 | May-24 |
|---|---------------|---------------|---------------|---------------|---------------|
| CPI (all items) | 197.82 | 199.12 | 200.03 | 201.93 | 203.55 |
| Food and Non-Alcoholic Beverages | 245.69 | 246.85 | 248.56 | 251.04 | 254.65 |
| Alcoholic Beverages, Tobacco and Narcotics | 179.91 | 180.26 | 180.48 | 182.73 | 182.92 |
| Clothing and Footwear | 177.44 | 178.42 | 180.05 | 181.77 | 184.23 |
| Housing, Water, Electricity, Gas and other Fuels | 138.63 | 139.31 | 139.70 | 140.35 | 140.94 |
| Furnishings and Household Maintenance | 161.85 | 162.09 | 162.50 | 163.16 | 163.71 |
| Health | 141.79 | 142.17 | 142.57 | 143.47 | 143.94 |
| Transport | 123.66 | 126.61 | 126.42 | 128.03 | 124.98 |
| Communication | 66.34 | 66.41 | 66.41 | 66.49 | 66.53 |
| Recreation and Culture | 128.93 | 129.72 | 130.47 | 131.55 | 132.03 |
| Education | 171.62 | 172.29 | 173.66 | 175.32 | 175.94 |
| Restaurants | 317.22 | 320.58 | 319.90 | 324.44 | 326.45 |
| Miscellaneous Goods and Services | 168.69 | 169.29 | 169.79 | 170.59 | 171.15 |
| 2. Percentage Change in the CPI and its Components | | | | | |
| 2.1 Month on Month Change (%) | | | | | |
| CPI (all items) | -2.48 | 0.66 | 0.45 | 0.95 | 0.80 |
| Food and Non-Alcoholic Beverages | -2.92 | 0.47 | 0.69 | 1.00 | 1.44 |
| Alcoholic Beverages, Tobacco and Narcotics | -3.55 | 0.19 | 0.12 | 1.24 | 0.10 |
| Clothing and Footwear | -3.07 | 0.55 | 0.92 | 0.95 | 1.35 |
| Housing, Water, Electricity, Gas and other Fuels | -2.10 | 0.49 | 0.28 | 0.47 | 0.42 |
| Furnishings and Household Maintenance | -1.11 | 0.15 | 0.25 | 0.41 | 0.34 |
| Health | -0.41 | 0.27 | 0.28 | 0.63 | 0.33 |
| Transport | -1.58 | 2.39 | -0.15 | 1.27 | -2.38 |
| Communication | -0.37 | 0.12 | 0.00 | 0.12 | 0.06 |
| Recreation and Culture | -2.99 | 0.61 | 0.58 | 0.83 | 0.37 |
| Education | -1.10 | 0.39 | 0.79 | 0.95 | 0.36 |
| Restaurants | -2.06 | 1.06 | -0.21 | 1.42 | 0.62 |
| Miscellaneous Goods and Services | -1.86 | 0.35 | 0.30 | 0.47 | 0.33 |
| 2.2 Year on Year Change (%) | | | | | |
| CPI (all items) | -0.48 | -0.29 | 0.03 | 0.50 | 1.10 |
| Food and Non-Alcoholic Beverages | -0.37 | -0.28 | 0.01 | 0.63 | 1.61 |
| Alcoholic Beverages, Tobacco and Narcotics | -0.17 | -0.11 | -0.17 | 1.01 | 0.01 |
| Clothing and Footwear | 0.23 | 0.51 | 1.16 | 1.65 | 2.52 |
| Housing, Water, Electricity, Gas and other Fuels | -0.21 | -0.08 | 0.32 | 0.03 | 0.09 |
| Furnishings and Household Maintenance | 0.06 | 0.10 | 0.22 | 0.47 | 0.61 |
| Health | -0.11 | 0.02 | 0.25 | 0.59 | 0.49 |
| Transport | -1.79 | -0.35 | 0.13 | 0.03 | -0.41 |
| Communication | -0.10 | -0.05 | -0.05 | 0.01 | 0.02 |
| Recreation and Culture | -0.21 | -0.25 | -0.08 | 0.39 | 0.35 |
| Education | 0.72 | 1.11 | 1.58 | 2.55 | 2.92 |
| Restaurants | -1.26 | -1.33 | -0.82 | 0.08 | 0.78 |
| Miscellaneous Goods and Services | 0.11 | 0.25 | 0.26 | 0.50 | 0.53 |
| 3. Three-month moving average CPI (All Items) | | | | | |
| Year on Year Change (%) | 201.43 | 199.93 | 198.99 | 200.36 | 201.83 |
| Year on Year Change (%) | 1.64 | 0.64 | -0.25 | 0.08 | 0.54 |
| 4. Twelve-month moving average CPI (All Items) | | | | | |
| Year on Year Change (%) | 202.16 | 202.11 | 202.11 | 202.20 | 202.38 |
| Year on Year Change (%) | 1.84 | 1.64 | 1.58 | 1.53 | 1.58 |

Source: National Institute of Statistics

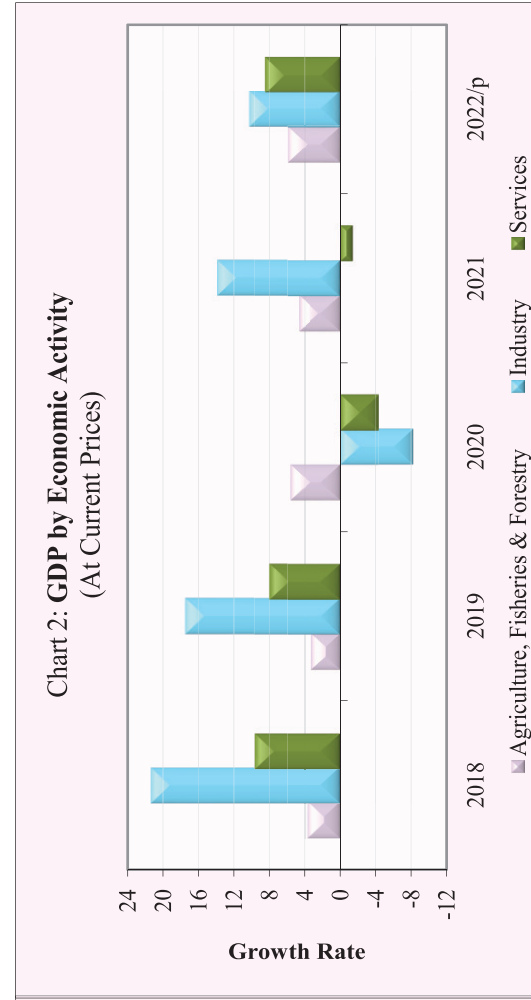
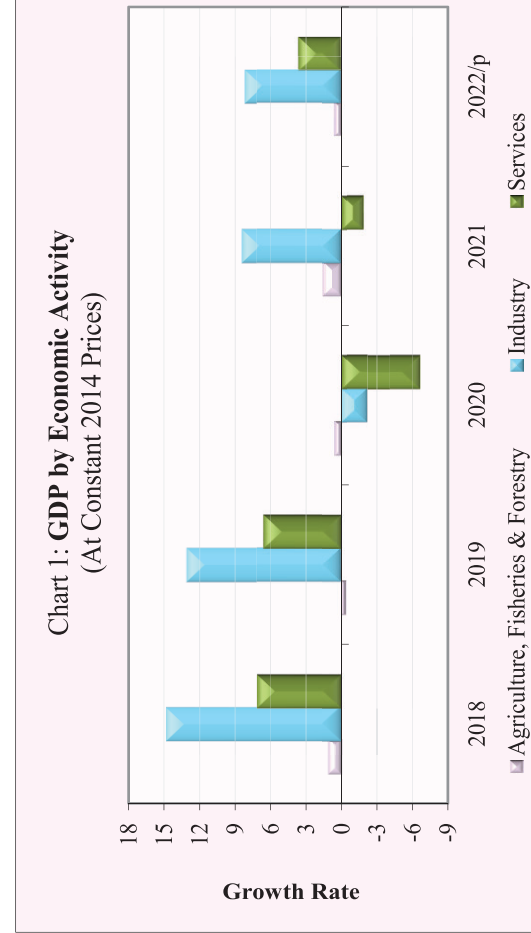
Table 2: Consumer Items Showing Price Increased in May 2024

| No. | Description | Weight | Index | | | Percentage Change | |
|-----|--|--------|--------|--------|--------|-------------------|--------|
| | | | May-23 | Apr-24 | May-24 | Monthly | Yearly |
| 1 | PULSES/LEGUMES | 0.413 | 264.10 | 270.00 | 429.58 | 59.1 | 62.7 |
| 2 | ROOT VEGETABLES | 0.456 | 292.95 | 300.39 | 308.95 | 2.9 | 5.5 |
| 3 | FRUIT VEGETABLES | 1.138 | 375.16 | 382.18 | 392.09 | 2.6 | 4.5 |
| 4 | LEAF AND STALK VEGETABLES (FRESH) | 2.031 | 246.92 | 249.72 | 255.43 | 2.3 | 3.4 |
| 5 | FRESH FRUITS | 4.094 | 266.80 | 269.07 | 274.70 | 2.1 | 3.0 |
| 6 | PREPARED AND PRESERVED VEGETABLES | 0.337 | 190.45 | 191.92 | 195.86 | 2.1 | 2.8 |
| 7 | TOOLS AND EQUIPMENT FOR HOUSE AND GARDEN | 0.017 | 233.66 | 234.34 | 239.00 | 2.0 | 2.3 |
| 8 | OTHER ARTICLES OF CLOTHING AND CLOTHING ACCESSORIES | 0.059 | 159.17 | 162.56 | 165.47 | 1.8 | 4.0 |
| 9 | HOUSEHOLD TEXTILES | 0.015 | 204.44 | 205.12 | 208.70 | 1.7 | 2.1 |
| 10 | TUBERS AND MUSHROOMS | 0.439 | 229.18 | 233.90 | 237.68 | 1.6 | 3.7 |
| 11 | OTHER CLOTHING (BOTH SEXES) | 0.222 | 148.13 | 153.09 | 155.49 | 1.6 | 5.0 |
| 12 | MINERAL WATERS, SOFT DRINKS, FRUIT AND VEGETABLE JUICES | 0.748 | 148.85 | 151.91 | 154.28 | 1.6 | 3.6 |
| 13 | SUGAR, JAM, HONEY, CHOCOLATE AND CONFECTIONERY | 1.489 | 168.94 | 173.86 | 176.45 | 1.5 | 4.4 |
| 14 | CLOTHING MATERIALS | 0.334 | 200.86 | 203.88 | 206.86 | 1.5 | 3.0 |
| 15 | FOOTWEAR | 0.641 | 193.81 | 197.35 | 200.13 | 1.4 | 3.3 |
| 16 | CLOTHING FOR MEN AND BOYS | 0.621 | 175.43 | 176.41 | 178.85 | 1.4 | 2.0 |
| 17 | MATERIALS FOR THE MAINTENANCE AND REPAIR OF THE DWELLING | 3.663 | 168.74 | 168.53 | 170.76 | 1.3 | 1.2 |
| 18 | CLOTHING FOR WOMEN AND GIRLS | 1.065 | 177.42 | 178.28 | 180.57 | 1.3 | 1.8 |
| 19 | FOOD PRODUCTS NEC | 1.404 | 255.66 | 255.94 | 259.18 | 1.3 | 1.4 |
| 20 | BREAD | 0.173 | 260.09 | 255.56 | 258.49 | 1.1 | -0.6 |
| 21 | SPARE PARTS AND ACCESSORIES FOR PERSONAL TRANSPORT EQUIPMENT | 0.084 | 304.54 | 304.58 | 307.73 | 1.0 | 1.0 |
| 22 | OILS AND FATS | 0.920 | 237.26 | 236.25 | 238.51 | 1.0 | 0.5 |
| 23 | PROCESSED FISH AND SEAFOOD | 1.646 | 307.26 | 307.58 | 310.47 | 0.9 | 1.0 |
| 24 | OTHER APPLIANCES, ARTICLES AND PRODUCTS FOR PERSONAL CARE | 0.399 | 177.17 | 178.15 | 179.80 | 0.9 | 1.5 |
| 25 | SEAFOOD (FRESH, CHILLED OR FROZEN) | 0.229 | 264.53 | 265.13 | 267.33 | 0.8 | 1.1 |
| 26 | SOLID FUELS | 1.475 | 260.56 | 255.19 | 256.95 | 0.7 | -1.4 |
| 27 | DRIED AND PRESERVED FRUITS | 0.086 | 198.45 | 199.78 | 201.12 | 0.7 | 1.3 |
| 28 | MOTOR OIL | 0.062 | 187.94 | 187.34 | 188.56 | 0.7 | 0.3 |
| 29 | DAIRY PRODUCTS | 1.552 | 180.57 | 180.53 | 181.68 | 0.6 | 0.6 |
| 30 | RESTAURANTS AND HOTELS | 5.861 | 323.92 | 324.44 | 326.45 | 0.6 | 0.8 |
| 31 | PROCESSED EGGS | 0.079 | 177.57 | 175.62 | 176.66 | 0.6 | -0.5 |
| 32 | OTHER GRAINS | 0.090 | 366.62 | 364.03 | 366.09 | 0.6 | -0.1 |
| 33 | GLASSWARE, TABLEWARE AND HOUSEHOLD UTENSILS | 0.078 | 155.10 | 154.92 | 155.78 | 0.6 | 0.4 |
| 34 | DUCK (FRESH) | 0.319 | 227.09 | 227.67 | 228.89 | 0.5 | 0.8 |
| 35 | FISH (FRESH) | 7.435 | 272.83 | 271.31 | 272.72 | 0.5 | 0.0 |
| 36 | HAIRDRESSING SALONS AND PERSONAL GROOMING ESTABLISHMENTS | 0.081 | 198.79 | 203.39 | 204.43 | 0.5 | 2.8 |
| 37 | FRESH EGGS | 1.013 | 166.54 | 167.04 | 167.85 | 0.5 | 0.8 |
| 38 | MEDICAL PRODUCTS, APPLIANCES AND EQUIPMENT | 3.588 | 142.68 | 142.41 | 143.09 | 0.5 | 0.3 |
| 39 | PORK (FRESH) | 5.618 | 253.51 | 252.33 | 253.52 | 0.5 | 0.0 |
| 40 | BISCUITS/ COOKIES | 0.280 | 186.21 | 186.23 | 187.01 | 0.4 | 0.4 |

Source: National Institute of Statistics

Table 3: Gross Domestic Product (GDP)

| | At Constant 2014 Prices | | | | | At Current Prices | | | | |
|--|-------------------------|-------------|-------------|-------------|------------|-------------------|-------------|-------------|-------------|-------------|
| | 2018 | 2019 | 2020 | 2021 | 2022/p | 2018 | 2019 | 2020 | 2021 | 2022/p |
| GDP in Billion KHR | 121,026 | 130,632 | 125,987 | 129,880 | 136,508 | 134,280 | 148,985 | 142,503 | 150,793 | 164,059 |
| GDP in Million USD | 29,772 | 32,322 | 31,240 | 31,964 | 33,446 | 32,931 | 36,344 | 34,835 | 36,726 | 39,491 |
| GDP % Growth Rate | 8.8 | 7.9 | -3.6 | 3.1 | 5.1 | 12.9 | 11.0 | -4.4 | 5.8 | 8.8 |
| GDP % Growth Rate, by Economic Activity | | | | | | | | | | |
| Agriculture, Fisheries & Forestry | 1.1 | -0.4 | 0.6 | 1.5 | 0.6 | 3.7 | 3.2 | 5.5 | 4.6 | 5.8 |
| Industry | 14.8 | 13.0 | -2.2 | 8.4 | 8.2 | 21.4 | 17.5 | -8.2 | 13.9 | 10.3 |
| Services | 7.1 | 6.6 | -6.7 | -1.8 | 3.6 | 9.7 | 8.0 | -4.3 | -1.4 | 8.5 |
| GDP Per Capita in Million KHR | 7.6 | 8.1 | 7.7 | 7.8 | 8.1 | 8.5 | 9.3 | 8.7 | 9.1 | 9.7 |
| GDP Per Capita in USD | 1,882 | 2,010 | 1,912 | 1,926 | 1,986 | 2,081 | 2,260 | 2,132 | 2,213 | 2,345 |



p/: preliminary estimates

Source: National Institute of Statistics

Table 4: Residential Property Price Index (RPPI)

| | Mar-23 | Apr-23 | May-23 | Jun-23 | Jul-23 | Aug-23 | Sep-23 | Oct-23 | Nov-23 | Dec-23 | Jan-24 | Feb-24 | Mar-24 | Apr-24 | May-24 | |
|---|--------|--------|--------|--------|--------|--------|--------|--------|--------|--------|--------|--------|--------|--------|--------|--|
| Residential Property Price Index (2020 =100) | | | | | | | | | | | | | | | | |
| Overall RPPI | 113.0 | 114.1 | 115.6 | 116.1 | 115.0 | 114.8 | 114.1 | 113.1 | 111.9 | 111.5 | 112.0 | 112.0 | 111.0 | 110.7 | 110.8 | |
| RPPI in Phnom Penh | 114.7 | 116.2 | 117.5 | 117.5 | 115.9 | 115.9 | 115.2 | 113.8 | 112.2 | 111.4 | 112.3 | 112.7 | 111.8 | 111.5 | 111.2 | |
| RPPI in Other Provinces | 104.1 | 103.1 | 105.7 | 109.3 | 110.4 | 108.9 | 108.4 | 109.7 | 110.4 | 111.5 | 110.4 | 109.3 | 107.7 | 107.6 | 109.0 | |
| Month on Month Change (%) | | | | | | | | | | | | | | | | |
| Overall RPPI | -0.1 | 0.9 | 1.3 | 0.5 | -1.0 | -0.2 | -0.6 | -0.8 | -1.1 | -0.4 | 0.5 | 0.0 | -0.9 | -0.3 | 0.1 | |
| RPPI in Phnom Penh | 0.1 | 1.3 | 1.1 | 0.0 | -1.3 | 0.0 | -0.7 | -1.2 | -1.4 | -0.7 | 0.8 | 0.3 | -0.7 | -0.3 | -0.2 | |
| RPPI in Other Provinces | -0.7 | -1.0 | 2.5 | 3.3 | 1.1 | -1.4 | -0.4 | 1.2 | 0.7 | 0.9 | -0.9 | -1.0 | -1.5 | -0.1 | 1.4 | |
| Year on Year Change (%) | | | | | | | | | | | | | | | | |
| Overall RPPI | 1.6 | 4.2 | 6.4 | 6.5 | 2.8 | 1.1 | -0.4 | -1.7 | -2.5 | -2.9 | -1.6 | -1.0 | -1.7 | -2.9 | -4.1 | |
| RPPI in Phnom Penh | 1.2 | 4.6 | 6.9 | 6.4 | 2.0 | 0.5 | -1.1 | -2.6 | -3.3 | -3.9 | -2.1 | -1.7 | -2.5 | -4.1 | -5.4 | |
| RPPI in Other Provinces | 6.3 | 4.2 | 5.3 | 8.9 | 9.2 | 6.6 | 5.8 | 5.5 | 3.2 | 3.6 | 2.1 | 4.2 | 3.4 | 4.3 | 3.1 | |

Note:

The methodology used to generate the RPPI index is the time-series method which complies with the IMF's RPPI Practical Compilation Guide published in 2020 (<https://www.imf.org/en/Data/Statistics/RPPI-guide>).
*Revised data

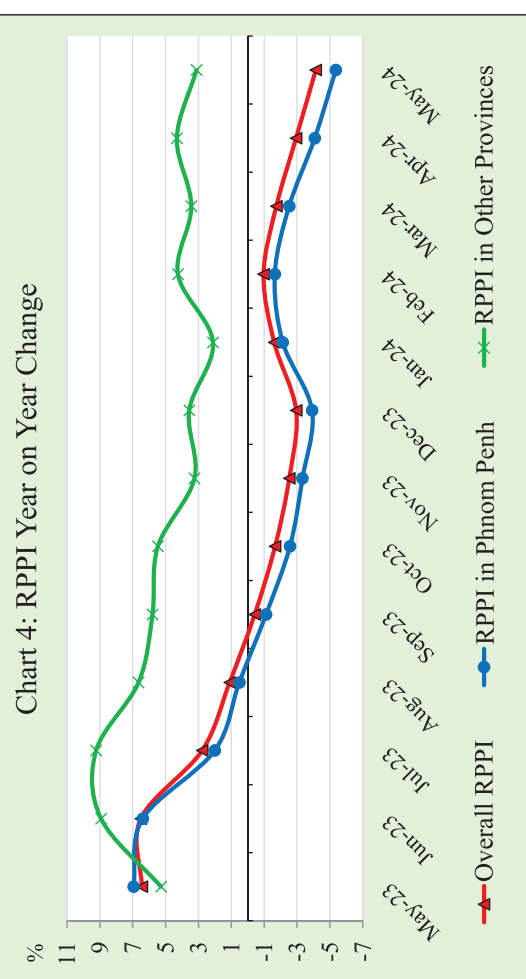
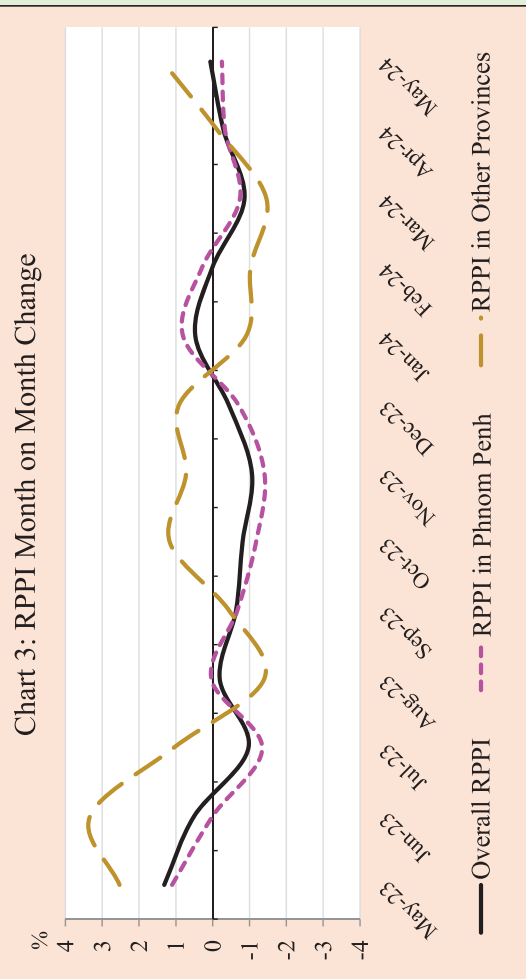


Table 5: Investment Projects Approved by Sectors

(In Million USD)

| Sector | Agriculture | | Industries | | Services | | Tourism | | Energy | | Health care (hospital) | | Agro-Industry | | Civil Engineering | | Infrastructure | | Mines | | Other | | Total | |
|-------------|-------------|--------------|------------|--------------|----------|--------------|----------|--------------|----------|--------------|------------------------|--------------|---------------|--------------|-------------------|--------------|----------------|--------------|----------|--------------|----------|--------------|----------|--------------|
| | Projects | Fixed Assets | Projects | Fixed Assets | Projects | Fixed Assets | Projects | Fixed Assets | Projects | Fixed Assets | Projects | Fixed Assets | Projects | Fixed Assets | Projects | Fixed Assets | Projects | Fixed Assets | Projects | Fixed Assets | Projects | Fixed Assets | Projects | Fixed Assets |
| 2018 | | | | | | | | | | | | | | | | | | | | | | | | |
| Total | 13 | 444.2 | 115 | 984.0 | 10 | 2,869.9 | 12 | 1,577.8 | - | - | - | - | - | - | - | - | - | - | - | - | - | - | 150 | 5,875.8 |
| 2019 | | | | | | | | | | | | | | | | | | | | | | | | |
| Total | 5 | 68.7 | 164 | 859.4 | 10 | 1,028.3 | 17 | 6,051.6 | 3 | 158.6 | - | - | - | - | - | - | - | - | - | - | - | - | 199 | 8,166.6 |
| 2020 | | | | | | | | | | | | | | | | | | | | | | | | |
| Total | 7 | 105.6 | 130 | 1,030.9 | 5 | 799.8 | 6 | 3,850.5 | 6 | 678.7 | - | - | - | - | - | - | - | - | - | - | - | - | 154 | 6,465.5 |
| 2021 | | | | | | | | | | | | | | | | | | | | | | | | |
| Total | 5 | 60.3 | 88 | 980.6 | 2 | 9.9 | 2 | 127.8 | 5 | 509.7 | 2 | 18.8 | - | - | - | - | - | - | - | - | - | - | 107 | 1,718.7 |
| 2022 | | | | | | | | | | | | | | | | | | | | | | | | |
| Q2 | 1 | 4.3 | 27 | 181.2 | 1 | 12.7 | - | - | - | - | - | - | - | - | 1 | 71.6 | - | - | - | - | - | - | 5 | 64.4 |
| Q3 | - | - | 24 | 122.9 | - | - | 2 | 35.3 | - | - | 3 | 64.0 | 1 | 7.2 | - | - | - | - | 1 | 13.0 | 1 | 23.4 | 32 | 265.8 |
| Q4 | - | - | 20 | 110.8 | 1 | 27.5 | 2 | 332.4 | - | - | - | - | - | - | 1 | 44.3 | - | - | - | - | - | - | 1 | 8.1 |
| Total | 4 | 79.9 | 99 | 580.9 | 3 | 50.2 | 5 | 496.6 | 1 | 389.4 | 4 | 79.0 | 4 | 60.5 | 2 | 75.8 | 1 | 1,300.0 | 1 | 13.0 | 8 | 104.1 | 132 | 3,229.6 |
| 2023 | | | | | | | | | | | | | | | | | | | | | | | | |
| Q1 | - | - | 26 | 186.5 | - | - | - | - | - | - | - | - | - | - | - | - | - | - | - | - | - | - | 1 | 6.0 |
| Q2 | 8 | 151.8 | 38 | 313.1 | 1 | 14.0 | 2 | 37.5 | - | - | - | - | - | - | - | - | - | - | - | - | - | - | 49 | 516.3 |
| Q3 | 3 | 20.8 | 45 | 560.1 | 1 | 91.2 | 1 | 84.5 | - | - | - | - | - | - | 1 | 1,376.0 | - | - | - | - | - | - | 51 | 2,132.6 |
| Q4 | 2 | 10.5 | 46 | 932.4 | 1 | 27.7 | - | - | - | - | - | - | - | - | - | - | - | - | - | - | - | - | 49.0 | 970.6 |
| Total | 13 | 183.0 | 155 | 1,992.1 | 3 | 132.9 | 3 | 122.0 | - | - | - | - | - | - | 1 | 1,376.0 | - | - | - | - | - | - | 176 | 3,812.1 |
| 2024 | | | | | | | | | | | | | | | | | | | | | | | | |
| Q1 | 4 | 66.6 | 61 | 859.1 | 2 | 137.2 | 2 | 588.9 | - | - | - | - | 1 | 108.8 | - | - | - | - | - | - | - | - | 70 | 1,171.7 |
| Total | 4 | 66.6 | 61.0 | 859.1 | 2 | 137.2 | 2 | 588.9 | - | - | - | - | 1 | 108.8 | - | - | - | - | - | - | - | - | 70 | 1,171.7 |

Chart 5: Investment Fixed Assets by Sectors

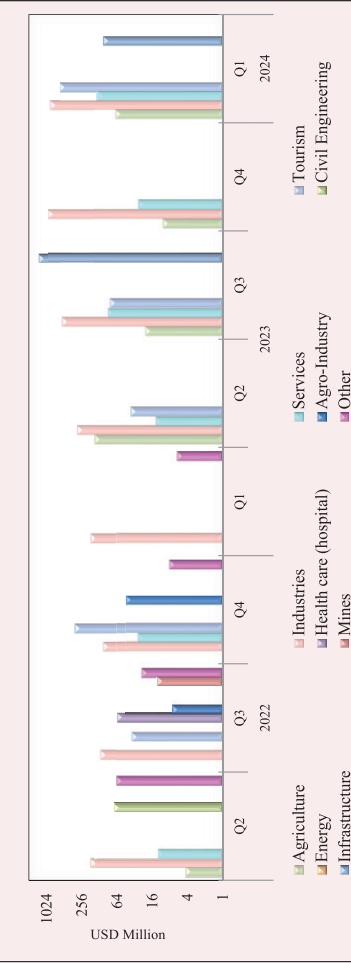
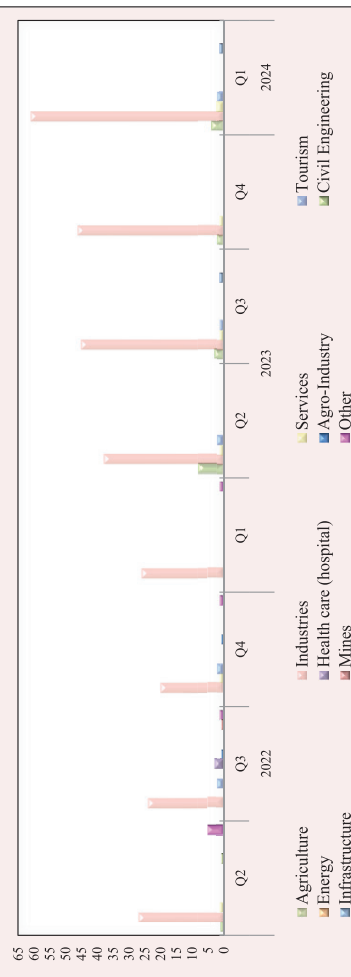


Chart 6: Number of Investment Projects by Sectors



Source: Council for the Development of Cambodia (Cambodian Investment Board)
* Revised data

Table 6: Investment Projects Approved by Major Countries*

(In Million USD)

| Country | 2022 | | | 2023 | | | | 2024 | |
|---------------|--------------|--------------|--------------|-------------------------|--------------|----------------|--------------|----------------|--|
| | Q2 | Q3 | Q4 | Q1 | Q2 | Q3 | Q4 | Q1 | |
| Cambodia | 27.6 | 120.8 | 376.0 | 10.4 | 154.5 | 226.7 | 704.6 | 1,278.4 | |
| China | 214.7 | 95.1 | 125.4 | 101.2 | 233.7 | 1,722.6 | 220.4 | 336.4 | |
| Korea | 8.2 | 6.8 | - | 5.6 | 11.6 | 4.3 | - | 10.8 | |
| United States | - | - | - | - | 5.4 | - | - | - | |
| Thailand | 8.9 | - | - | - | 10.4 | - | - | - | |
| Vietnam | - | - | - | - | 73.4 | - | - | 49.0 | |
| Malaysia | - | - | - | - | - | 91.2 | - | 6.1 | |
| Singapore | - | - | - | - | - | 5.8 | 5.2 | 36.9 | |
| Taiwan | 18.0 | 17.1 | 5.1 | 66.6 | - | 46.2 | 16.7 | 14.3 | |
| Australia | - | - | - | - | - | - | - | - | |
| England | - | - | - | - | - | - | - | - | |
| Japan | - | 26.0 | - | - | - | - | - | - | |
| Hong Kong | 56.7 | - | 16.6 | 8.8 | 27.4 | 35.8 | 23.7 | 28.7 | |
| Others | - | - | - | - | - | - | - | - | |
| Total | 334.2 | 265.8 | 523.0 | 192.6 | 516.3 | 2,132.7 | 970.6 | 1,760.6 | |
| | | | | (Share of Total) | | | | | |
| Cambodia | 8.3 | 45.5 | 71.9 | 5.4 | 29.9 | 10.6 | 72.6 | 72.6 | |
| China | 64.3 | 35.8 | 24.0 | 52.5 | 45.3 | 80.8 | 22.7 | 19.1 | |
| Korea | 2.5 | 2.5 | - | 2.9 | 2.2 | 0.2 | - | 0.6 | |
| United States | - | - | - | - | 1.0 | - | - | - | |
| Thailand | 2.7 | - | - | - | 2.0 | - | - | - | |
| Vietnam | - | - | - | - | 14.2 | - | - | 2.8 | |
| Malaysia | - | - | - | - | - | 4.3 | - | 0.3 | |
| Singapore | - | - | - | - | - | 0.3 | 0.5 | 2.1 | |
| Taiwan | 5.4 | 6.4 | 1.0 | 34.6 | - | 2.2 | 1.7 | 0.8 | |
| Australia | - | - | - | - | - | - | - | - | |
| England | - | - | - | - | - | - | - | - | |
| Japan | - | 9.8 | - | - | - | - | - | - | |
| Hong Kong | 17.0 | - | 3.2 | 4.6 | 5.3 | 1.7 | 2.4 | 1.6 | |
| Others | - | - | - | - | - | - | - | - | |
| Total | 100.0 | 100.0 | 100.0 | 100.0 | 100.0 | 100.0 | 100.0 | 100.0 | |

* Fixed Assets

Source: Council for the Development of Cambodia (Cambodian Investment Board)

Table 7: Daily Exchange Rate in May 2024

(KHR/USD)

| Day | Parallel Market Rate | | | Official Rate | Daily Change* | |
|---------------------|----------------------|--------------|--------------|---------------|---------------|------------|
| | Purchase | Sale | Midpoint | | Spread | % Change |
| 1 | 4,063 | 4,074 | 4,069 | 4,064 | 0.0 | 0.0 |
| 2 | 4,069 | 4,080 | 4,075 | 4,066 | 6.0 | 0.1 |
| 3 | 4,069 | 4,080 | 4,075 | 4,072 | 0.0 | 0.0 |
| 4 | 4,069 | 4,080 | 4,075 | 4,072 | 0.0 | 0.0 |
| 5 | 4,069 | 4,080 | 4,075 | 4,072 | 0.0 | 0.0 |
| 6 | 4,072 | 4,082 | 4,077 | 4,074 | 3.0 | 0.1 |
| 7 | 4,074 | 4,084 | 4,079 | 4,075 | 2.0 | 0.0 |
| 8 | 4,074 | 4,084 | 4,079 | 4,075 | 0.0 | 0.0 |
| 9 | 4,074 | 4,084 | 4,079 | 4,076 | 0.0 | 0.0 |
| 10 | 4,074 | 4,084 | 4,079 | 4,076 | 0.0 | 0.0 |
| 11 | 4,074 | 4,084 | 4,079 | 4,076 | 0.0 | 0.0 |
| 12 | 4,074 | 4,084 | 4,079 | 4,076 | 0.0 | 0.0 |
| 13 | 4,073 | 4,083 | 4,078 | 4,077 | -1.0 | 0.0 |
| 14 | 4,073 | 4,083 | 4,078 | 4,077 | 0.0 | 0.0 |
| 15 | 4,074 | 4,083 | 4,079 | 4,079 | 1.0 | 0.0 |
| 16 | 4,074 | 4,083 | 4,079 | 4,077 | 0.0 | 0.0 |
| 17 | 4,074 | 4,083 | 4,079 | 4,078 | 0.0 | 0.0 |
| 18 | 4,074 | 4,083 | 4,079 | 4,078 | 0.0 | 0.0 |
| 19 | 4,074 | 4,083 | 4,079 | 4,078 | 0.0 | 0.0 |
| 20 | 4,074 | 4,084 | 4,079 | 4,077 | 0.0 | 0.0 |
| 21 | 4,074 | 4,084 | 4,079 | 4,078 | 0.0 | 0.0 |
| 22 | 4,074 | 4,084 | 4,079 | 4,078 | 0.0 | 0.0 |
| 23 | 4,076 | 4,087 | 4,082 | 4,077 | 2.0 | 0.0 |
| 24 | 4,076 | 4,087 | 4,082 | 4,079 | 0.0 | 0.0 |
| 25 | 4,076 | 4,087 | 4,082 | 4,079 | 0.0 | 0.0 |
| 26 | 4,076 | 4,087 | 4,082 | 4,079 | 0.0 | 0.0 |
| 27 | 4,080 | 4,090 | 4,085 | 4,081 | 4.0 | 0.1 |
| 28 | 4,081 | 4,091 | 4,086 | 4,083 | 1.0 | 0.0 |
| 29 | 4,083 | 4,093 | 4,088 | 4,085 | 2.0 | 0.0 |
| 30 | 4,087 | 4,098 | 4,093 | 4,090 | 4.0 | 0.1 |
| 31 | 4,093 | 4,107 | 4,100 | 4,093 | 6.0 | 0.1 |
| Average Rate | 4,075 | 4,085 | 4,080 | 4,077 | 1.0 | 0.0 |

* Spread of Daily Purchasing Market Rate

Table 8: Monthly Exchange Rate

(KHR/USD, End-Period)

| Month | Market Rate | | | | Official Rate |
|---------------|-------------|-----------------|-------|----------|---------------|
| | Purchase | Monthly %Change | Sale | Midpoint | |
| Dec-15 | 4,048 | 0.10 | 4,055 | 4,052 | 4,050 |
| Dec-16 | 4,039 | 0.17 | 4,050 | 4,045 | 4,037 |
| Dec-17 | 4,037 | 0.07 | 4,046 | 4,042 | 4,037 |
| Dec-18 | 4,027 | -0.27 | 4,039 | 4,033 | 4,018 |
| Dec-19 | 4,079 | 0.12 | 4,089 | 4,084 | 4,075 |
| Dec-20 | 4,069 | 0.00 | 4,084 | 4,077 | 4,045 |
| Dec-21 | 4,109 | 0.17 | 4,118 | 4,114 | 4,074 |
| 2022 | | | | | |
| Jul | 4,097 | 0.15 | 4,104 | 4,101 | 4,099 |
| Aug | 4,104 | 0.17 | 4,115 | 4,110 | 4,107 |
| Sep | 4,117 | 0.32 | 4,126 | 4,122 | 4,119 |
| Oct | 4,135 | 0.44 | 4,145 | 4,140 | 4,141 |
| Nov | 4,110 | -0.60 | 4,120 | 4,115 | 4,122 |
| Dec | 4,113 | 0.07 | 4,123 | 4,118 | 4,117 |
| 2023 | | | | | |
| Jan | 4,102 | -0.27 | 4,113 | 4,108 | 4,104 |
| Feb | 4,050 | -1.27 | 4,063 | 4,057 | 4,043 |
| Mar | 4,051 | 0.02 | 4,062 | 4,057 | 4,054 |
| Apr | 4,114 | 1.56 | 4,126 | 4,120 | 4,115 |
| May | 4,116 | 0.05 | 4,126 | 4,121 | 4,116 |
| Jun | 4,126 | 0.24 | 4,136 | 4,131 | 4,130 |
| Jul | 4,124 | -0.05 | 4,134 | 4,129 | 4,130 |
| Aug | 4,151 | 0.65 | 4,161 | 4,156 | 4,158 |
| Sep | 4,119 | -0.77 | 4,130 | 4,125 | 4,122 |
| Oct | 4,129 | 0.24 | 4,137 | 4,133 | 4,135 |
| Nov | 4,113 | -0.39 | 4,123 | 4,118 | 4,115 |
| Dec | 4,080 | -0.80 | 4,090 | 4,085 | 4,085 |
| 2024 | | | | | |
| Jan | 4,080 | 0.00 | 4,091 | 4,086 | 4,083 |
| Feb | 4,064 | -0.39 | 4,073 | 4,069 | 4,069 |
| Mar | 4,040 | -0.59 | 4,049 | 4,045 | 4,041 |
| Apr | 4,063 | 0.57 | 4,074 | 4,069 | 4,064 |
| May | 4,093 | 0.74 | 4,107 | 4,100 | 4,093 |

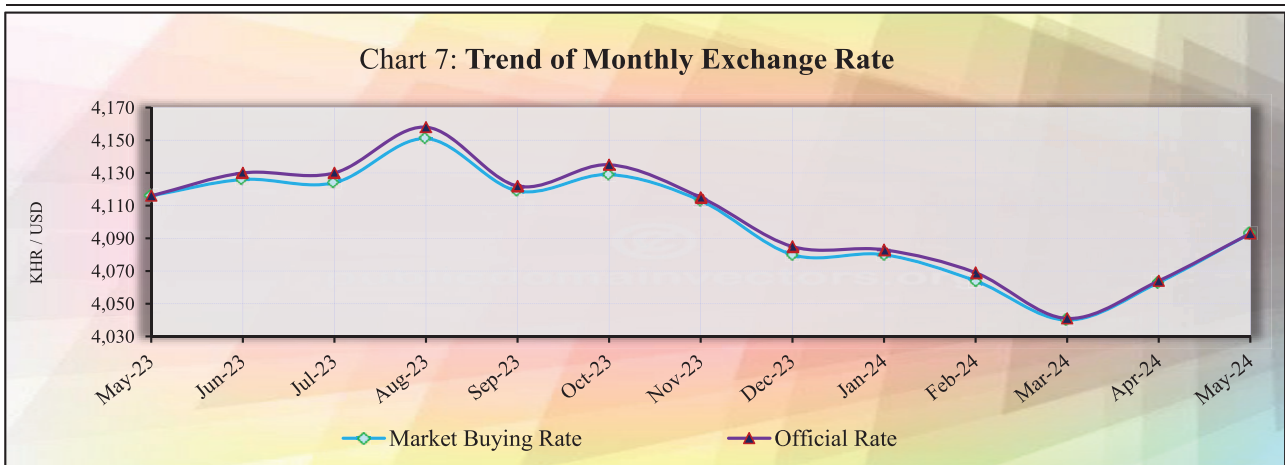


Table 9: The Value of KHR Against Other Currencies

(Official Buying Rate, End-Period)

| Unit | SDR | US Dollar | Euro | Japanese Yen | British Pounds | Indonesian Rupiah | Malaysian Ringgit | Philippines Peso | Singapore Dollar | Thai Baht | Vietnamese Dong | China Yuan |
|-------------------------|-------------|-------------|-------------|--------------|----------------|-------------------|-------------------|------------------|------------------|-------------|-----------------|-------------|
| | I | I | I | 100 | I | 1000 | I | 100 | I | I | 1000 | I |
| Dec-18 | 5,588 | 4,018 | 4,597 | 3,641 | 5,098 | 277 | 969 | 7,653 | 2,942 | 124 | 174 | 584 |
| Dec-19 | 5,635 | 4,075 | 4,565 | 3,743 | 5,344 | 293 | 994 | 8,050 | 3,023 | 136 | 176 | 583 |
| Dec-20 | 5,826 | 4,045 | 4,962 | 3,908 | 5,465 | 287 | 1,000 | 8,423 | 3,049 | 135 | 175 | 619 |
| Dec-21 | 5,702 | 4,074 | 4,614 | 3,541 | 5,499 | 286 | 977 | 7,992 | 3,015 | 122 | 179 | 639 |
| 2022 | | | | | | | | | | | | |
| Jun | 5,425 | 4,070 | 4,250 | 2,978 | 4,936 | 274 | 925 | 7,393 | 2,922 | 116 | 175 | 607 |
| Jul | 5,398 | 4,099 | 4,177 | 3,050 | 4,989 | 275 | 921 | 7,346 | 2,972 | 113 | 175 | 608 |
| Aug | 5,356 | 4,107 | 4,117 | 2,961 | 4,789 | 277 | 918 | 7,308 | 2,938 | 113 | 175 | 595 |
| Sep | 5,255 | 4,119 | 4,049 | 2,853 | 4,605 | 270 | 889 | 6,985 | 2,878 | 108 | 173 | 578 |
| Oct | 5,323 | 4,141 | 4,124 | 2,805 | 4,802 | 266 | 877 | 7,144 | 2,935 | 109 | 167 | 571 |
| Nov | 5,417 | 4,122 | 4,254 | 2,971 | 4,923 | 262 | 915 | 7,288 | 2,997 | 116 | 167 | 576 |
| Dec | 5,479 | 4,117 | 4,378 | 3,079 | 4,956 | 263 | 931 | 7,392 | 3,053 | 119 | 174 | 591 |
| 2023 | | | | | | | | | | | | |
| Jan | 5,545 | 4,104 | 4,468 | 3,155 | 5,083 | 274 | 967 | 7,524 | 3,125 | 125 | 175 | 608 |
| Feb | 5,368 | 4,043 | 4,267 | 2,969 | 4,837 | 265 | 903 | 7,283 | 2,995 | 115 | 170 | 581 |
| Mar | 5,454 | 4,054 | 4,409 | 3,062 | 5,010 | 269 | 918 | 7,452 | 3,054 | 118 | 173 | 590 |
| Apr | 5,561 | 4,115 | 4,547 | 3,074 | 5,129 | 280 | 923 | 7,385 | 3,081 | 121 | 175 | 594 |
| May | 5,481 | 4,116 | 4,405 | 2,936 | 5,092 | 275 | 894 | 7,312 | 3,041 | 118 | 175 | 581 |
| Jun | 5,514 | 4,130 | 4,508 | 2,862 | 5,224 | 276 | 884 | 7,470 | 3,052 | 116 | 175 | 570 |
| Jul | 5,571 | 4,130 | 4,527 | 2,956 | 5,291 | 274 | 907 | 7,526 | 3,098 | 121 | 174 | 577 |
| Aug | 5,513 | 4,158 | 4,518 | 2,840 | 5,253 | 273 | 895 | 7,330 | 3,071 | 118 | 172 | 570 |
| Sep | 5,405 | 4,122 | 4,336 | 2,759 | 5,015 | 266 | 876 | 7,235 | 3,006 | 112 | 169 | 565 |
| Oct | 5,418 | 4,135 | 4,363 | 2,764 | 5,002 | 260 | 868 | 7,261 | 3,023 | 115 | 168 | 565 |
| Nov | 5,487 | 4,115 | 4,523 | 2,793 | 5,226 | 267 | 885 | 7,431 | 3,091 | 118 | 170 | 578 |
| Dec | 5,481 | 4,085 | 4,541 | 2,899 | 5,231 | 265 | 887 | 7,363 | 3,102 | 120 | 168 | 575 |
| 2024 | | | | | | | | | | | | |
| Jan | 5,427 | 4,083 | 4,419 | 2,769 | 5,181 | 259 | 864 | 7,239 | 3,048 | 116 | 167 | 569 |
| Feb | 5,406 | 4,069 | 4,401 | 2,699 | 5,142 | 260 | 854 | 7,240 | 3,022 | 113 | 165 | 565 |
| Mar | 5,354 | 4,041 | 4,361 | 2,670 | 5,094 | 255 | 854 | 7,190 | 2,994 | 111 | 163 | 559 |
| Apr | 5,354 | 4,064 | 4,349 | 2,610 | 5,085 | 250 | 852 | 7,047 | 2,987 | 110 | 160 | 561 |
| May | 5,417 | 4,093 | 4,425 | 2,606 | 5,199 | 252 | 870 | 6,981 | 3,028 | 111 | 161 | 565 |
| Monthly % Change | 1.18 | 0.71 | 1.75 | -0.15 | 2.24 | 0.80 | 2.11 | -0.94 | 1.37 | 0.91 | 0.63 | 0.71 |

Table 10: Deposit Money Bank's Interest Rates on Deposits and Loans in KHR and USD

| | Dec-19 | Dec-20 | Dec-21 | Dec-22 | Jan-23 | Feb-23 | Mar-23 | Apr-23 | May-23 | Jun-23 | Jul-23 | Aug-23 | Sep-23 | Oct-23 | Nov-23 | Dec-23 | Jan-24 | Feb-24 | Mar-24 | Apr-24 | May-24 | |
|--|--------|--------|--------|--------|--------|--------|--------|--------|--------|--------|--------|--------|--------|--------|--------|--------|--------|--------|--------|--------|--------|--|
| <i>Weighted Average Rate on New Amount</i> | | | | | | | | | | | | | | | | | | | | | | |
| Interest Rate on Deposits and Loans in KHR | | | | | | | | | | | | | | | | | | | | | | |
| Deposit | | | | | | | | | | | | | | | | | | | | | | |
| Demand Deposits | 0.12 | 0.03 | 0.35 | 0.29 | 0.19 | 0.25 | 0.18 | 0.19 | 0.16 | 0.20 | 0.18 | 0.18 | 0.18 | 0.25 | 0.24 | 0.19 | 0.18 | 0.16 | 0.28 | 0.17 | 0.25 | |
| Saving Deposits | 0.60 | 0.60 | 1.05 | 0.85 | 0.85 | 0.88 | 0.89 | 0.88 | 0.87 | 0.88 | 0.89 | 0.87 | 0.89 | 0.89 | 0.91 | 0.83 | 0.92 | 0.83 | 0.80 | 0.81 | 0.81 | |
| Term Deposits | 4.10 | 5.34 | 4.79 | 6.12 | 6.29 | 6.70 | 7.45 | 6.64 | 7.00 | 6.67 | 6.91 | 6.61 | 6.64 | 6.65 | 6.82 | 6.54 | 6.69 | 6.09 | 5.76 | 5.93 | 6.13 | |
| Other Deposits | 2.47 | 3.49 | 2.20 | 7.16 | 6.32 | 5.06 | 7.10 | 6.72 | 4.77 | 6.99 | 6.52 | 6.10 | 6.28 | 6.23 | 6.51 | 7.09 | 7.10 | 7.18 | 6.96 | 7.22 | 6.91 | |
| Overdraft | 7.72 | 7.14 | 6.32 | 7.38 | 7.99 | 8.49 | 9.41 | 9.42 | 9.06 | 9.46 | 9.48 | 10.66 | 10.49 | 10.48 | 8.89 | 7.61 | 8.90 | 8.71 | 8.86 | 9.13 | 7.13 | |
| Credit Card | 16.73 | 14.21 | 13.84 | 15.66 | 12.72 | 14.72 | 13.68 | 15.73 | 13.62 | 13.61 | 14.01 | 14.97 | 13.24 | 14.34 | 14.02 | 16.20 | 14.52 | 12.80 | 12.05 | 12.70 | 9.85 | |
| Term Loans | 9.13 | 10.15 | 10.18 | 10.88 | 12.03 | 12.61 | 12.28 | 11.82 | 12.35 | 11.86 | 11.87 | 11.42 | 12.08 | 12.69 | 12.25 | 11.40 | 12.45 | 12.67 | 12.32 | 12.45 | 12.58 | |
| Other Loans | 5.59 | 6.47 | 7.00 | 5.24 | 7.54 | 7.41 | 7.67 | 7.20 | 7.60 | 6.89 | 6.65 | 6.88 | 6.71 | 7.05 | 7.52 | 4.93 | 6.63 | 6.94 | 6.93 | 6.28 | 6.19 | |
| Interest Rate on Deposits and Loans in USD | | | | | | | | | | | | | | | | | | | | | | |
| Deposit | | | | | | | | | | | | | | | | | | | | | | |
| Demand Deposits | 0.20 | 0.10 | 0.18 | 0.32 | 0.29 | 0.33 | 0.36 | 0.33 | 0.36 | 0.37 | 0.38 | 0.33 | 0.43 | 0.42 | 0.43 | 0.26 | 0.37 | 0.35 | 0.65 | 0.35 | 0.43 | |
| Saving Deposits | 0.24 | 0.17 | 0.21 | 0.30 | 0.28 | 0.28 | 0.28 | 0.30 | 0.31 | 0.41 | 0.30 | 0.26 | 0.30 | 0.32 | 0.28 | 0.42 | 0.35 | 0.36 | 0.36 | 0.35 | 0.35 | |
| Term Deposits | 3.44 | 3.24 | 3.98 | 5.59 | 5.28 | 5.54 | 5.53 | 5.42 | 5.63 | 5.75 | 5.49 | 5.71 | 5.84 | 5.57 | 5.87 | 6.08 | 5.83 | 5.86 | 5.67 | 5.70 | 5.34 | |
| Other Deposits | 2.47 | 0.80 | 3.93 | 6.57 | 5.75 | 3.08 | 6.85 | 6.39 | 6.83 | 7.14 | 6.19 | 6.64 | 7.42 | 6.46 | 7.57 | 6.20 | 6.88 | 7.48 | 7.42 | 7.04 | 7.05 | |
| Loans | | | | | | | | | | | | | | | | | | | | | | |
| Overdraft | 7.57 | 6.15 | 5.97 | 7.68 | 7.39 | 7.71 | 7.39 | 7.45 | 7.81 | 7.93 | 7.53 | 8.32 | 8.08 | 8.25 | 8.30 | 8.13 | 8.30 | 8.47 | 8.04 | 7.71 | 6.55 | |
| Credit Card | 11.97 | 17.02 | 17.27 | 17.45 | 18.02 | 17.51 | 17.84 | 17.91 | 17.99 | 17.82 | 17.70 | 17.51 | 17.22 | 18.14 | 17.72 | 18.25 | 17.05 | 16.90 | 17.33 | 17.31 | 16.67 | |
| Term Loans | 8.72 | 9.11 | 9.09 | 9.10 | 9.88 | 10.19 | 9.70 | 9.83 | 9.61 | 9.46 | 10.13 | 9.88 | 10.46 | 10.57 | 10.41 | 9.78 | 10.34 | 10.35 | 10.05 | 10.33 | 10.96 | |
| Other Loans | 6.50 | 6.01 | 5.93 | 6.67 | 6.78 | 6.75 | 6.84 | 7.28 | 7.36 | 7.41 | 7.22 | 7.28 | 7.41 | 7.51 | 7.69 | 7.23 | 7.55 | 7.66 | 7.68 | 7.64 | 7.58 | |
| <i>Weighted Average Rate on Outstanding Amount</i> | | | | | | | | | | | | | | | | | | | | | | |
| Interest Rate on Deposits and Loans in KHR | | | | | | | | | | | | | | | | | | | | | | |
| Deposit | | | | | | | | | | | | | | | | | | | | | | |
| Demand Deposits | 0.22 | 0.19 | 0.47 | 0.54 | 0.42 | 0.47 | 0.37 | 0.43 | 0.42 | 0.40 | 0.44 | 0.47 | 0.51 | 0.51 | 0.54 | 0.57 | 0.54 | 0.59 | 0.43 | 0.48 | 0.53 | |
| Saving Deposits | 0.91 | 0.82 | 1.02 | 1.12 | 1.18 | 1.16 | 1.12 | 1.09 | 1.18 | 1.18 | 1.18 | 1.18 | 1.23 | 1.23 | 1.27 | 1.24 | 1.25 | 1.15 | 1.15 | 1.18 | 1.21 | |
| Term Deposits | 5.42 | 5.66 | 5.85 | 6.63 | 6.71 | 6.84 | 7.03 | 7.10 | 7.20 | 7.21 | 7.28 | 7.25 | 7.32 | 7.31 | 7.28 | 7.34 | 7.35 | 7.32 | 7.30 | 7.28 | 7.21 | |
| Other Deposits | 2.81 | 3.20 | 2.20 | 2.23 | 1.88 | 1.66 | 1.63 | 1.71 | 1.74 | 2.32 | 2.39 | 5.97 | 6.26 | 6.30 | 6.56 | 6.67 | 6.38 | 6.90 | 6.72 | 6.65 | 6.78 | |
| Loans | | | | | | | | | | | | | | | | | | | | | | |
| Overdraft | 8.08 | 7.93 | 8.26 | 8.48 | 8.47 | 8.42 | 8.41 | 8.44 | 8.45 | 8.40 | 8.44 | 8.46 | 8.48 | 8.51 | 8.09 | 8.14 | 8.14 | 8.15 | 8.13 | 8.08 | 8.12 | |
| Credit Card | 17.29 | 16.25 | 15.30 | 14.26 | 14.07 | 14.13 | 14.06 | 13.94 | 14.16 | 14.05 | 14.10 | 13.95 | 13.78 | 13.73 | 13.82 | 13.85 | 13.80 | 13.78 | 13.71 | 13.63 | 13.42 | |
| Term Loans | 10.62 | 10.54 | 10.52 | 10.62 | 10.65 | 10.67 | 10.68 | 10.69 | 10.72 | 10.76 | 10.75 | 10.75 | 11.30 | 11.32 | 11.31 | 11.32 | 11.36 | 11.36 | 11.33 | 11.38 | 11.39 | |
| Other Loans | 6.28 | 6.73 | 6.67 | 6.46 | 6.64 | 6.53 | 6.61 | 6.63 | 6.57 | 6.58 | 6.47 | 6.70 | 6.44 | 6.44 | 6.39 | 6.06 | 6.33 | 6.30 | 6.34 | 6.31 | 6.31 | |
| Interest Rate on Deposits and Loans in USD | | | | | | | | | | | | | | | | | | | | | | |
| Deposit | | | | | | | | | | | | | | | | | | | | | | |
| Demand Deposits | 0.35 | 0.41 | 0.40 | 0.60 | 0.70 | 0.76 | 0.77 | 0.72 | 0.79 | 0.75 | 0.79 | 0.81 | 0.79 | 0.81 | 0.85 | 0.88 | 0.89 | 0.96 | 1.00 | 0.99 | 1.04 | |
| Saving Deposits | 0.43 | 0.41 | 0.47 | 0.65 | 0.66 | 0.66 | 0.67 | 0.67 | 0.72 | 0.71 | 0.75 | 0.71 | 0.77 | 0.79 | 0.78 | 0.78 | 0.80 | 0.73 | 0.75 | 0.76 | 0.81 | |
| Term Deposits | 4.34 | 4.40 | 4.53 | 5.26 | 5.34 | 5.46 | 5.58 | 5.65 | 5.75 | 5.85 | 5.93 | 6.01 | 6.24 | 6.28 | 6.25 | 6.38 | 6.40 | 6.41 | 6.40 | 6.40 | 6.34 | |
| Other Deposits | 2.43 | 0.94 | 3.28 | 2.76 | 2.45 | 2.47 | 2.49 | 2.28 | 2.47 | 2.13 | 2.11 | 4.56 | 4.62 | 4.70 | 4.78 | 3.90 | 4.72 | 4.59 | 4.83 | 4.94 | 5.00 | |
| Loans | | | | | | | | | | | | | | | | | | | | | | |
| Overdraft | 7.82 | 7.71 | 7.47 | 7.38 | 7.44 | 7.44 | 7.45 | 7.45 | 7.49 | 7.51 | 7.53 | 7.57 | 7.83 | 7.67 | 7.69 | 7.71 | 7.68 | 7.71 | 7.72 | 7.71 | 7.62 | |
| Credit Card | 15.53 | 17.11 | 16.62 | 16.13 | 16.33 | 16.16 | 16.08 | 16.33 | 16.12 | 16.15 | 16.15 | 16.03 | 15.99 | 15.95 | 16.04 | 16.06 | 16.07 | 15.99 | 15.85 | 16.01 | 15.88 | |
| Term Loans | 9.51 | 9.36 | 9.18 | 9.22 | 9.24 | 9.22 | 9.25 | 9.26 | 9.27 | 9.28 | 9.30 | 9.31 | 9.73 | 9.73 | 9.76 | 9.75 | 9.75 | 9.76 | 9.76 | 9.77 | 9.91 | |
| Other Loans | 7.19 | 6.93 | 6.83 | 6.86 | 6.92 | 7.03 | 7.12 | 7.13 | 7.15 | 7.08 | 7.31 | 7.33 | 7.38 | 7.40 | 7.44 | 7.47 | 7.46 | 7.45 | 8.27 | 7.49 | 7.43 | |

Including Commercial Banks and Specialized Banks

*Revised Data

Table 11: Central Bank Survey*

(In Billion KHR)

| | Jan-24 | Feb-24 | Mar-24 | Apr-24 | May-24 |
|---|------------------|-----------------|------------------|------------------|------------------|
| Net Foreign Assets | 79,375.4 | 77,119.1 | 77,976.3 | 79,293.3 | 78,635.6 |
| Claims on Nonresidents | 80,750.6 | 78,489.0 | 79,333.1 | 80,650.0 | 80,008.3 |
| Liabilities to Nonresidents | -1,375.2 | -1,369.9 | -1,356.8 | -1,356.8 | -1,372.7 |
| Claims on Other Depository Corporations | 1,020.9 | 1,076.2 | 1,179.5 | 1,258.8 | 1,177.7 |
| Net Claims on Central Government | -10,895.5 | -9,988.2 | -10,991.2 | -11,015.6 | -11,130.9 |
| Claims on Central Government | 0.0 | 0.0 | 0.0 | 0.0 | 0.0 |
| Liabilities to Central Government | -10,895.5 | -9,988.2 | -10,991.2 | -11,015.6 | -11,130.9 |
| Claims on Other Sectors | 35.6 | 40.0 | 47.5 | 48.2 | 54.5 |
| Claims on Other Financial Corporations | 0.0 | 0.0 | 0.0 | 0.0 | 0.0 |
| Claims on State and Local Government | 0.0 | 0.0 | 0.0 | 0.0 | 0.0 |
| Claims on Public Nonfinancial Corporations | 0.0 | 0.0 | 0.0 | 0.0 | 0.0 |
| Claims on Private Sector | 35.6 | 40.0 | 47.5 | 48.2 | 54.5 |
| Monetary Base | 59,012.5 | 57,366.1 | 57,480.4 | 57,797.3 | 56,319.1 |
| Currency in Circulation | 17,298.3 | 17,820.6 | 18,516.0 | 18,567.9 | 17,436.9 |
| Liabilities to Other Depository Corporations | 41,690.0 | 39,519.8 | 38,911.6 | 39,174.0 | 38,844.1 |
| Liabilities to Other Sectors | 24.2 | 25.7 | 52.8 | 55.4 | 38.1 |
| Other Liabilities to Other Depository Corporations | 9,550.5 | 10,572.3 | 9,557.3 | 10,267.3 | 10,816.9 |
| Deposits And Securities Other Than Shares Excl. Form Monetary Base | 49.3 | 49.3 | 49.1 | 49.2 | 49.4 |
| Deposits Included in Broad Money | 0.0 | 0.0 | 0.0 | 0.0 | 0.0 |
| Securities Other Than Shares Incl. in Broad Money | 0.0 | 0.0 | 0.0 | 0.0 | 0.0 |
| Deposits Excl. From Broad Money | 49.3 | 49.3 | 49.1 | 49.2 | 49.4 |
| Securities Other Than Shares Excl. From Broad Money | 0.0 | 0.0 | 0.0 | 0.0 | 0.0 |
| Loans | 0.0 | 0.0 | 0.0 | 0.0 | 0.0 |
| Financial Derivatives | 0.0 | 0.0 | 0.0 | 0.0 | 0.0 |
| Shares and Other Equity | 4,453.8 | 3,698.1 | 4,547.8 | 4,889.4 | 4,938.9 |
| Other Items (Net) | -3,529.7 | -3,438.6 | -3,422.5 | -3,418.5 | -3,387.4 |
| <i>IFS Vertical Check</i> | <i>0.0</i> | <i>0.0</i> | <i>0.0</i> | <i>0.0</i> | <i>0.0</i> |

* Included only central bank

** Revised Data

Table 12: Other Depository Corporations Survey*

(In Billion KHR)

| | Jan-24 | Feb-24 | Mar-24 | Apr-24 | May-24 |
|--|------------------|------------------|------------------|------------------|------------------|
| Net Foreign Assets | -19,031.9 | -14,578.1 | -11,426.3 | -10,458.8 | -7,695.0 |
| Claims on Nonresidents | 27,781.6 | 28,366.0 | 30,321.9 | 30,460.6 | 31,541.7 |
| Liabilities to Nonresidents | -46,813.5 | -42,944.1 | -41,748.2 | -40,919.4 | -39,236.6 |
| Claims On Central Bank | 52,817.4 | 51,756.5 | 49,831.3 | 51,262.7 | 51,649.4 |
| Currency | 2,365.3 | 2,386.1 | 2,484.7 | 2,695.1 | 2,418.7 |
| Reserve Deposits and Securities Other Than Shares | 50,394.7 | 49,317.7 | 47,297.5 | 48,521.8 | 49,188.6 |
| Other Claims on Central Bank | 57.5 | 52.6 | 49.1 | 45.8 | 42.1 |
| Net Claims on Central Government | -9,989.2 | -10,160.0 | -10,144.6 | -9,915.5 | -10,556.4 |
| Claims on Central Government | 320.8 | 360.6 | 436.1 | 455.6 | 491.7 |
| Liabilities to Central Government | -10,309.9 | -10,520.7 | -10,580.7 | -10,371.1 | -11,048.1 |
| Claims on Other Sectors | 230,430.3 | 230,094.6 | 229,589.5 | 230,802.3 | 232,565.7 |
| Claims on Other Financial Corporations | 4,044.0 | 4,054.3 | 3,950.2 | 3,940.9 | 3,882.7 |
| Claims on State and Local Government | 0.0 | 0.0 | 0.0 | 0.0 | 0.0 |
| Claims on Public Nonfinancial Corporations | 14.7 | 6.5 | 27.4 | 20.6 | 13.5 |
| Claims on Private Sector | 226,371.5 | 226,033.8 | 225,611.9 | 226,840.8 | 228,669.5 |
| Liabilities to Central Bank | 3,725.7 | 3,704.8 | 3,665.1 | 3,736.6 | 3,895.0 |
| Transferable Deposits Incl. in Broad Money | 27,851.0 | 29,172.8 | 28,585.2 | 28,341.4 | 28,797.0 |
| Other Deposits Incl. in Broad Money | 152,612.2 | 154,127.2 | 155,768.6 | 159,000.2 | 162,335.1 |
| Securities Other Than Shares Incl. in Broad Money | 0.0 | 0.0 | 0.0 | 0.0 | 0.0 |
| Deposits Excl. From Broad Money | 171.9 | 157.7 | 196.3 | 279.9 | 189.7 |
| Securities Other Than Shares Excl. From Broad Money | 0.0 | 0.0 | 0.0 | 0.0 | 0.0 |
| Loans | 2,262.9 | 2,310.7 | 2,100.7 | 2,238.4 | 2,227.5 |
| Financial Derivatives | 0.0 | 0.0 | 0.0 | 0.0 | 0.0 |
| Shares and Other Equity | 61,414.0 | 61,313.6 | 61,059.8 | 61,326.8 | 61,784.5 |
| Other Items (Net) | 6,188.9 | 6,326.2 | 6,474.2 | 6,767.4 | 6,735.0 |
| <i>IFS Vertical Check</i> | <i>0.0</i> | <i>0.0</i> | <i>0.0</i> | <i>0.0</i> | <i>0.0</i> |

* Included commercial banks and MDIs

** Revised Data

Table 13: Depository Corporations Survey*

(In Billion KHR)

| | Jan-24 | Feb-24 | Mar-24 | Apr-24 | May-24 |
|--|------------------|------------------|------------------|------------------|------------------|
| Net Foreign Assets | 60,343.5 | 62,541.1 | 66,550.1 | 68,834.5 | 70,940.7 |
| Claims on Nonresidents | 108,532.2 | 106,855.0 | 109,655.1 | 111,110.7 | 111,550.0 |
| Liabilities to Nonresidents | -48,188.6 | -44,314.0 | -43,105.0 | -42,276.2 | -40,609.3 |
| Domestic Claims | 209,581.2 | 209,986.4 | 208,501.2 | 209,919.4 | 210,932.9 |
| Net Claims on Central Government | -20,884.6 | -20,148.2 | -21,135.8 | -20,931.1 | -21,687.3 |
| Claims on Central Government | 320.8 | 360.6 | 436.1 | 455.6 | 491.7 |
| Liabilities to Central Government | -21,205.4 | -20,508.8 | -21,571.9 | -21,386.7 | -22,179.1 |
| Claims on Other Sectors | 230,465.8 | 230,134.6 | 229,637.0 | 230,850.6 | 232,620.2 |
| Claims on Other Financial Corporations | 4,044.0 | 4,054.3 | 3,950.2 | 3,940.9 | 3,882.7 |
| Claims on State and Local Government | 0.0 | 0.0 | 0.0 | 0.0 | 0.0 |
| Claims on Public Nonfinancial Corporations | 14.7 | 6.5 | 27.4 | 20.6 | 13.5 |
| Claims on Private Sector | 226,407.1 | 226,073.8 | 225,659.4 | 226,889.1 | 228,724.0 |
| Broad Money Liabilities (M2) | 195,420.5 | 198,760.2 | 200,437.9 | 203,269.7 | 206,188.4 |
| Currency Outside Depository Corporations | 14,933.0 | 15,434.5 | 16,031.3 | 15,872.8 | 15,018.2 |
| Transferable Deposits | 27,857.2 | 29,180.6 | 28,620.0 | 28,378.8 | 28,817.0 |
| Other Deposits | 152,630.2 | 154,145.1 | 155,786.6 | 159,018.1 | 162,353.1 |
| Securities Other Than Shares | 0.0 | 0.0 | 0.0 | 0.0 | 0.0 |
| <i>of which Foreign Currency (of M2)</i> | <i>163,283.1</i> | <i>165,845.2</i> | <i>167,656.6</i> | <i>170,282.9</i> | <i>173,590.0</i> |
| Deposits Excl. From Broad Money | 221.2 | 207.1 | 245.3 | 329.2 | 239.1 |
| Securities Other Than Shares Excl. From Broad Money | 0.0 | 0.0 | 0.0 | 0.0 | 0.0 |
| Loans | 2,262.9 | 2,310.7 | 2,100.7 | 2,238.4 | 2,227.5 |
| Financial Derivative | 0.0 | 0.0 | 0.0 | 0.0 | 0.0 |
| Shares and Other Equity | 65,867.8 | 65,011.7 | 65,607.6 | 66,216.2 | 66,723.4 |
| Other Items (Net) | 6,152.4 | 6,237.9 | 6,659.8 | 6,700.5 | 6,495.2 |
| <i>IFS Vertical Check</i> | <i>0.0</i> | <i>0.0</i> | <i>0.0</i> | <i>0.0</i> | <i>0.0</i> |

* Included data of central bank and other depository corporations(ODCs)

** Revised Data

Table 14: Other Financial Corporations Survey*

(In Billion KHR)

| | Jan-24 | Feb-24 | Mar-24** | Apr-24** | May-24 |
|--|-----------------|-----------------|-----------------|-----------------|-----------------|
| Net Foreign Assets | -1,110.7 | -1,091.3 | -1,044.1 | -1,075.8 | -1,029.9 |
| Claims on Nonresidents | 441.7 | 444.0 | 533.8 | 534.2 | 541.0 |
| Liabilities to Nonresidents | -1,552.4 | -1,535.3 | -1,577.9 | -1,610.0 | -1,570.9 |
| Claims on Depository Corporations | 5,256.9 | 4,817.8 | 6,145.5 | 6,117.3 | 6,044.3 |
| Net Claims on Central Government | -14.3 | -14.1 | -11.2 | -11.4 | -11.5 |
| Claims on Central Government | 5.6 | 5.7 | 4.4 | 4.6 | 4.7 |
| Liabilities to Central Government | -19.9 | -19.8 | -15.6 | -15.9 | -16.2 |
| Claims on Other Sectors | 9,855.4 | 8,605.1 | 8,584.1 | 8,629.4 | 8,691.5 |
| Claims on State and Local Government | 0.0 | 0.0 | 0.0 | 0.0 | 0.0 |
| Claims on Public Nonfinancial Corporations | 2.7 | 2.7 | 2.6 | 2.6 | 2.6 |
| Claims on Private Sector | 9,852.8 | 8,602.5 | 8,581.5 | 8,626.9 | 8,689.0 |
| Deposit | 1.5 | 1.6 | 1.7 | 1.5 | 1.6 |
| Securities Other Than Shares | 0.0 | 0.0 | 0.8 | 0.8 | 0.8 |
| Loans | 6,252.5 | 4,970.9 | 4,964.8 | 4,950.6 | 4,928.6 |
| Financial Derivatives | 0.0 | 0.0 | 0.0 | 0.0 | 0.0 |
| Shares and Other Equity | 5,860.0 | 5,416.3 | 6,559.0 | 6,604.0 | 6,618.3 |
| Other Items (Net) | -192.3 | -136.9 | -147.0 | -192.4 | -149.9 |
| <i>IFS Vertical Check</i> | <i>0.0</i> | <i>0.0</i> | <i>0.0</i> | <i>0.0</i> | <i>0.0</i> |

* Included only specialized banks from Dec-2013 to Dec-2020.
From Jan-2021 to present, OFCs included Specialized Banks,
MFIs and Insurance Companies.

** Revised Data

Table 15: Financial Corporations Survey*

(In Billion KHR)

| | Jan-24 | Feb-24 | Mar-24** | Apr-24** | May-24 |
|--|------------------|------------------|------------------|------------------|------------------|
| Net Foreign Assets | 59,232.8 | 61,449.8 | 65,506.0 | 67,758.7 | 69,910.8 |
| Claims on Nonresidents | 108,973.9 | 107,299.1 | 110,188.9 | 111,644.9 | 112,091.0 |
| Liabilities to Nonresidents | -49,741.0 | -45,849.3 | -44,682.9 | -43,886.2 | -42,180.2 |
| Domestic Claims | 215,378.3 | 214,523.2 | 213,123.9 | 214,596.6 | 215,730.2 |
| Net Claims on Central Government | -20,898.9 | -20,162.3 | -21,147.0 | -20,942.5 | -21,698.8 |
| Claims on Central Government | 326.3 | 366.3 | 440.5 | 460.2 | 496.5 |
| Liabilities to Central Government | -21,225.2 | -20,528.6 | -21,587.5 | -21,402.7 | -22,195.2 |
| Claims on Other Sectors | 236,277.2 | 234,685.4 | 234,270.9 | 235,539.1 | 237,429.0 |
| Claims on State and Local Government | 0.0 | 0.0 | 0.0 | 0.0 | 0.0 |
| Claims on Public Nonfinancial Corporations | 17.4 | 9.1 | 30.0 | 23.2 | 16.1 |
| Claims on Private Sector | 236,259.8 | 234,676.3 | 234,240.9 | 235,515.9 | 237,412.9 |
| Currency Outside Financial Corporations | 14,921.9 | 15,424.8 | 15,991.0 | 15,831.3 | 14,973.6 |
| Deposits | 177,637.3 | 180,414.6 | 181,591.3 | 184,592.3 | 188,305.5 |
| Securities Other Than Shares | 0.0 | 0.0 | 0.0 | 0.0 | 0.0 |
| Loans | 8,146.2 | 6,934.8 | 6,739.6 | 6,869.4 | 6,858.9 |
| Financial Derivatives | 0.0 | 0.0 | 0.0 | 0.0 | 0.0 |
| Shares and Other Equity | 71,727.7 | 70,428.0 | 72,166.7 | 72,820.2 | 73,341.6 |
| Other Items (Net) | 112.3 | 705.2 | -153.6 | -52.9 | -133.6 |
| <i>IFS Vertical Check</i> | <i>0.0</i> | <i>0.0</i> | <i>0.0</i> | <i>0.0</i> | <i>0.0</i> |

* Included data of depository corporations and other financial corporations

** Revised Data

Chart 8: Financial Corporations Survey

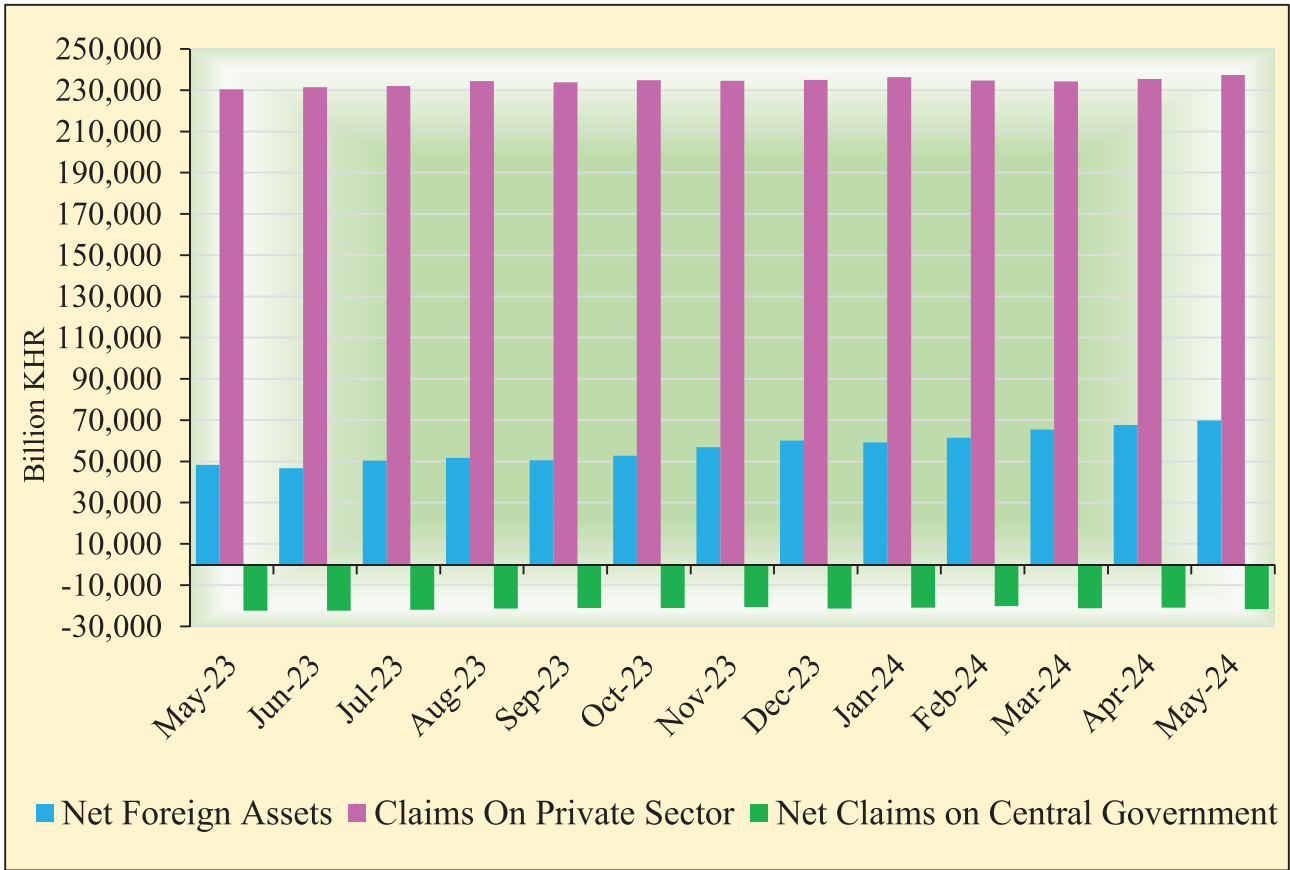


Chart 9: Monetary Aggregates Components

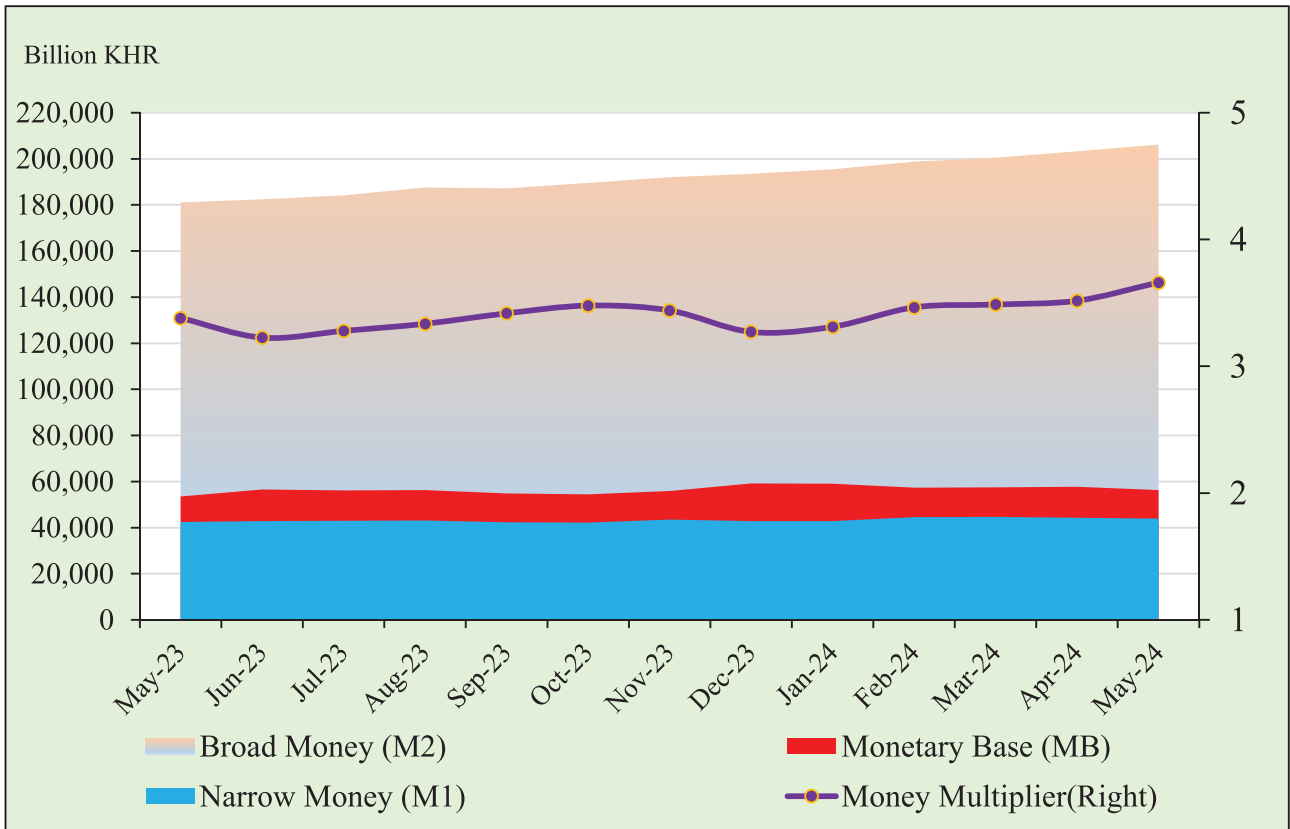


Table 16: Credit Granted by Banking Institutions Classified by Industry

(In Billion KHR)

| | Jan-24 | Feb-24 | Mar-24 | Apr-24 | May-24 |
|---|------------------|------------------|------------------|------------------|------------------|
| 1. Financial Institutions | 7,525.5 | 7,369.0 | 7,021.9 | 6,981.7 | 6,897.2 |
| 1.1. National Bank of Cambodia | 0.0 | 0.0 | 0.0 | 0.0 | 0.0 |
| 1.2. Depository Institutions | 5,727.9 | 5,594.2 | 5,255.4 | 5,224.4 | 5,130.3 |
| 1.3. Other Financial Institutions | 1,797.6 | 1,774.7 | 1,766.6 | 1,757.3 | 1,766.9 |
| 2. Non-Financial Institutions | 161,876.5 | 161,426.2 | 160,893.9 | 161,889.0 | 163,896.0 |
| 2.1. Agriculture, Forestry and Fishing | 19,339.3 | 19,250.7 | 19,095.8 | 19,133.2 | 19,191.1 |
| 2.2. Mining and Quarrying | 1,106.0 | 1,135.3 | 1,153.9 | 1,167.0 | 1,195.1 |
| 2.3. Manufacturing | 9,494.5 | 9,447.7 | 9,380.5 | 9,274.4 | 9,432.0 |
| 2.4. Utilities | 2,405.3 | 2,489.3 | 2,503.7 | 2,527.3 | 2,551.4 |
| 2.5. Construction | 20,431.7 | 20,436.6 | 20,600.1 | 20,805.9 | 20,886.5 |
| 2.6. Wholesale Trade | 18,961.1 | 18,951.9 | 18,629.1 | 18,868.6 | 18,980.9 |
| 2.7. Retail Trade | 37,352.4 | 37,336.8 | 37,049.4 | 37,185.9 | 37,501.0 |
| 2.8. Hotels and Restaurants | 8,450.8 | 8,136.7 | 8,120.8 | 8,136.6 | 8,193.2 |
| 2.9. Transport and Storage | 6,433.7 | 6,355.3 | 6,310.8 | 6,385.1 | 6,421.6 |
| 2.10. Information Media and Telecommunications | 1,092.7 | 1,029.5 | 1,059.3 | 1,061.0 | 1,052.1 |
| 2.11. Rental and Operational Leasing Activities, Excluding Real Estate Leasing and Rentals | 2,846.4 | 2,920.1 | 2,862.3 | 2,842.3 | 3,002.0 |
| 2.12. Real Estate Activities | 22,867.7 | 22,821.9 | 23,340.3 | 23,672.5 | 24,489.1 |
| 2.13. Other Non-Financial Services | 11,094.8 | 11,114.3 | 10,788.0 | 10,829.1 | 11,000.0 |
| 3. Personal Essentials | 48,521.3 | 48,666.0 | 48,981.4 | 49,262.4 | 49,002.7 |
| 3.1. Personal Lending | 20,023.7 | 20,339.9 | 20,845.8 | 21,031.1 | 21,022.5 |
| 3.2. Credit Cards | 729.7 | 720.7 | 733.6 | 740.8 | 749.0 |
| 3.3. Mortgages, Owner-Occupied Housing only | 27,768.0 | 27,605.4 | 27,402.0 | 27,490.5 | 27,231.2 |
| 4. Other Lending | 2,926.7 | 2,962.2 | 2,930.5 | 2,897.6 | 2,941.1 |
| Total Gross Loan | 220,850.1 | 220,423.3 | 219,827.7 | 221,030.7 | 222,737.0 |

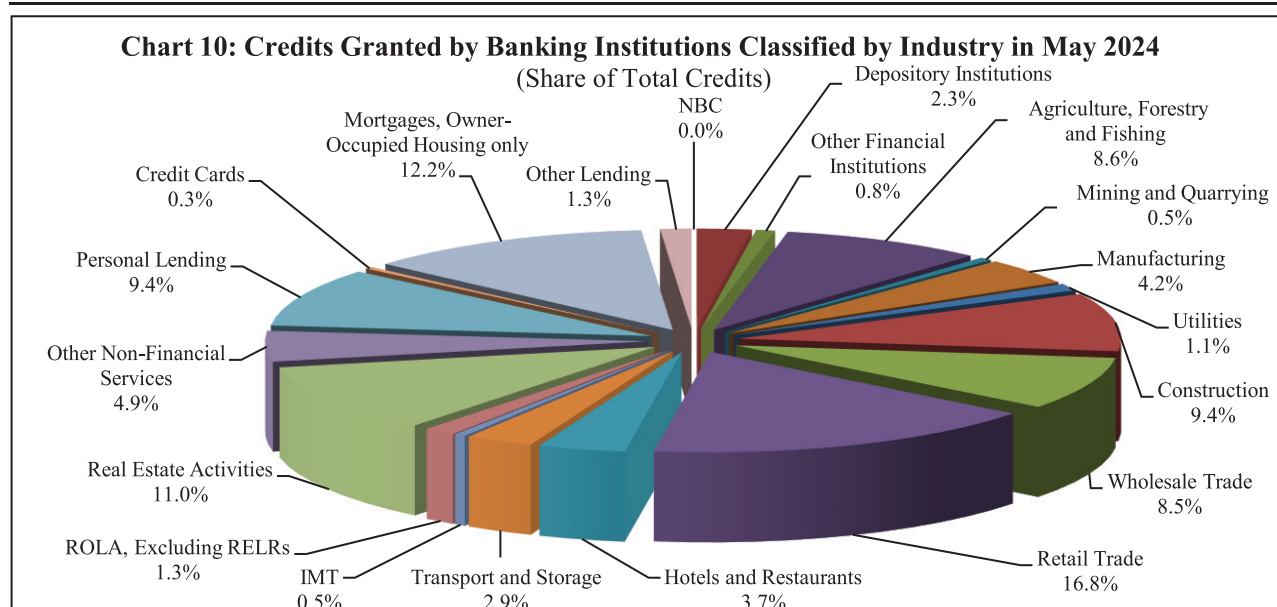


Table 17: Monthly Change of Credit Granted by Banking Institutions Classified by Industry

| | Jan-24 | Feb-24 | Mar-24 | Apr-24 | May-24 |
|---|-----------------|---------------|---------------|----------------|----------------|
| (Monthly Change in Billion KHR) | | | | | |
| 1. Financial Institutions | -309.2 | -156.6 | -347.0 | -40.2 | -84.5 |
| 1.1. National Bank of Cambodia | 0.0 | 0.0 | 0.0 | 0.0 | 0.0 |
| 1.2. Depository Institutions | -251.7 | -133.7 | -338.9 | -31.0 | -94.1 |
| 1.3. Other Financial Institutions | -57.5 | -22.9 | -8.2 | -9.2 | 9.6 |
| 2. Non-Financial Institutions | 961.5 | -450.4 | -532.3 | 995.1 | 2,007.0 |
| 2.1. Agriculture, Forestry and Fishing | 91.1 | -88.7 | -154.9 | 37.4 | 57.9 |
| 2.2. Mining and Quarrying | 16.9 | 29.4 | 18.6 | 13.1 | 28.1 |
| 2.3. Manufacturing | 161.1 | -46.8 | -67.2 | -106.1 | 157.6 |
| 2.4. Utilities | -10.1 | 84.1 | 14.3 | 23.7 | 24.1 |
| 2.5. Construction | -397.4 | 4.9 | 163.4 | 205.8 | 80.6 |
| 2.6. Wholesale Trade | -317.2 | -9.2 | -322.8 | 239.5 | 112.3 |
| 2.7. Retail Trade | 181.8 | -15.6 | -287.5 | 136.6 | 315.1 |
| 2.8. Hotels and Restaurants | 44.4 | -314.1 | -15.9 | 15.8 | 56.6 |
| 2.9. Transport and Storage | 373.3 | -78.4 | -44.5 | 74.3 | 36.5 |
| 2.10. Information Media and Telecommunications | 19.7 | -63.3 | 29.9 | 1.7 | -8.9 |
| 2.11. Rental and Operational Leasing Activities, Excluding Real Estate Leasing and Rentals | -8.1 | 73.7 | -57.8 | -20.0 | 159.7 |
| 2.12. Real Estate Activities | 690.2 | -45.8 | 518.4 | 332.2 | 816.6 |
| 2.13. Other Non-Financial Services | 115.8 | 19.4 | -326.3 | 41.1 | 170.9 |
| 3. Personal Essentials | -1,191.0 | 144.7 | 315.4 | 280.9 | -259.7 |
| 3.1. Personal Lending | -520.9 | 316.2 | 505.9 | 185.3 | -8.6 |
| 3.2. Credit Cards | 20.5 | -9.0 | 12.9 | 7.1 | 8.2 |
| 3.3. Mortgages, Owner-Occupied Housing only | -690.5 | -162.6 | -203.4 | 88.5 | -259.3 |
| 4. Other Lending | 173.4 | 35.5 | -31.7 | -32.9 | 43.5 |
| Total Gross Loan | -365.3 | -426.8 | -595.6 | 1,203.0 | 1,706.2 |
| (Monthly Percentage Change) | | | | | |
| 1. Financial Institutions | -3.9 | -2.1 | -4.7 | -0.6 | -1.2 |
| 1.1. National Bank of Cambodia | 0.0 | 0.0 | 0.0 | 0.0 | 0.0 |
| 1.2. Depository Institutions | -4.2 | -2.3 | -6.1 | -0.6 | -1.8 |
| 1.3. Other Financial Institutions | -3.1 | -1.3 | -0.5 | -0.5 | 0.5 |
| 2. Non-Financial Institutions | 0.6 | -0.3 | -0.3 | 0.6 | 1.2 |
| 2.1. Agriculture, Forestry and Fishing | 0.5 | -0.5 | -0.8 | 0.2 | 0.3 |
| 2.2. Mining and Quarrying | 1.6 | 2.7 | 1.6 | 1.1 | 2.4 |
| 2.3. Manufacturing | 1.7 | -0.5 | -0.7 | -1.1 | 1.7 |
| 2.4. Utilities | -0.4 | 3.5 | 0.6 | 0.9 | 1.0 |
| 2.5. Construction | -1.9 | 0.0 | 0.8 | 1.0 | 0.4 |
| 2.6. Wholesale Trade | -1.6 | 0.0 | -1.7 | 1.3 | 0.6 |
| 2.7. Retail Trade | 0.5 | 0.0 | -0.8 | 0.4 | 0.8 |
| 2.8. Hotels and Restaurants | 0.5 | -3.7 | -0.2 | 0.2 | 0.7 |
| 2.9. Transport and Storage | 6.2 | -1.2 | -0.7 | 1.2 | 0.6 |
| 2.10. Information Media and Telecommunications | 1.8 | -5.8 | 2.9 | 0.2 | -0.8 |
| 2.11. Rental and Operational Leasing Activities, Excluded Real Estate Leasing and Rentals | -0.3 | 2.6 | -2.0 | -0.7 | 5.6 |
| 2.12. Real Estate Activities | 3.1 | -0.2 | 2.3 | 1.4 | 3.4 |
| 2.13. Other Non-Financial Services | 1.1 | 0.2 | -2.9 | 0.4 | 1.6 |
| 3. Personal Essentials | -2.4 | 0.3 | 0.6 | 0.6 | -0.5 |
| 3.1. Personal Lending | -2.5 | 1.6 | 2.5 | 0.9 | 0.0 |
| 3.2. Credit Cards | 2.9 | -1.2 | 1.8 | 1.0 | 1.1 |
| 3.3. Mortgages, Owner-Occupied Housing only | -2.4 | -0.6 | -0.7 | 0.3 | -0.9 |
| 4. Other Lending | 6.3 | 1.2 | -1.1 | -1.1 | 1.5 |
| Total Gross Loan | -0.2 | -0.2 | -0.3 | 0.5 | 0.8 |

Table 18: Deposits with Banks

(In Billion KHR)

| | Jan-24 | Feb-24 | Mar-24 | Apr-24 | May-24 |
|--------------------------------------|------------------|------------------|------------------|------------------|------------------|
| Deposits in KHR | | | | | |
| Demand deposits | 4,450.5 | 4,531.1 | 4,691.9 | 4,620.7 | 4,551.7 |
| Savings deposits | 4,179.6 | 4,284.8 | 4,242.8 | 4,253.6 | 4,434.6 |
| Fixed deposits | 12,609.5 | 12,630.1 | 12,291.8 | 12,546.5 | 12,944.2 |
| Others | 410.1 | 425.7 | 416.7 | 438.5 | 448.5 |
| Total | 21,649.7 | 21,871.6 | 21,643.2 | 21,859.4 | 22,379.0 |
| Deposits in Foreign Currency* | | | | | |
| Demand deposits | 27,433.4 | 28,708.7 | 28,762.3 | 27,981.8 | 28,931.2 |
| Savings deposits | 42,052.9 | 42,233.3 | 43,382.8 | 44,270.5 | 45,068.2 |
| Fixed deposits | 96,446.8 | 97,725.3 | 98,802.1 | 100,969.0 | 103,152.2 |
| Others | 2,846.1 | 2,860.9 | 2,905.2 | 3,090.4 | 3,063.4 |
| Total | 168,779.2 | 171,528.2 | 173,852.4 | 176,311.7 | 180,214.9 |
| Grand Total | 190,428.9 | 193,399.8 | 195,495.6 | 198,171.0 | 202,593.9 |

* Deposits in foreign currency include deposits of Cambodian residents and non-residents

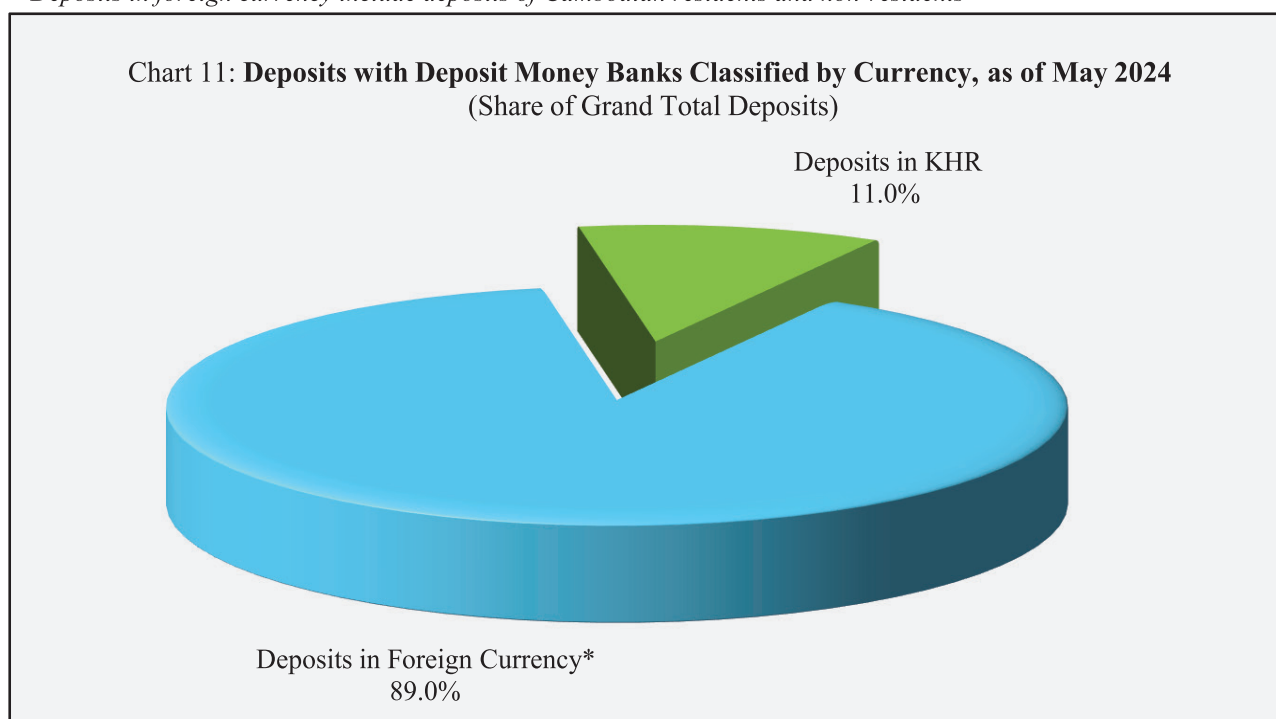


Table 19: Monthly Change of Deposits with Banks

| | Jan-24 | Feb-24 | Mar-24 | Apr-24 | May-24 |
|-------------------------------------|--------------------------------|----------------|----------------|----------------|----------------|
| | (Change in Billion KHR) | | | | |
| Deposits in KHR | | | | | |
| Demand deposits | 68.0 | 80.6 | 160.8 | -71.1 | -69.0 |
| Savings deposits | -82.5 | 105.2 | -42.0 | 10.8 | 181.1 |
| Fixed deposits | 237.3 | 20.6 | -338.2 | 254.7 | 397.7 |
| Others | -1.5 | 15.6 | -9.0 | 21.8 | 9.9 |
| Total | 221.4 | 222.0 | -228.4 | 216.2 | 519.7 |
| Deposits in Foreign Currency | | | | | |
| Demand deposits | -27.3 | 1,275.3 | 53.5 | -780.4 | 949.4 |
| Savings deposits | 252.9 | 180.4 | 1,149.5 | 887.7 | 797.7 |
| Fixed deposits | 1,915.9 | 1,278.5 | 1,076.8 | 2,166.8 | 2,183.2 |
| Others | -4.8 | 14.7 | 44.3 | 185.2 | -27.0 |
| Total | 2,136.8 | 2,749.0 | 2,324.2 | 2,459.3 | 3,903.3 |
| Grand Total | 2,358.2 | 2,970.9 | 2,095.8 | 2,675.4 | 4,422.9 |
| | (Percentage Change) | | | | |
| Deposits in KHR | | | | | |
| Demand deposits | 1.6 | 1.8 | 3.5 | -1.5 | -1.5 |
| Savings deposits | -1.9 | 2.5 | -1.0 | 0.3 | 4.3 |
| Fixed deposits | 1.9 | 0.2 | -2.7 | 2.1 | 3.2 |
| Others | -0.4 | 3.8 | -2.1 | 5.2 | 2.3 |
| Total | 1.0 | 1.0 | -1.0 | 1.0 | 2.4 |
| Deposits in Foreign Currency | | | | | |
| Demand deposits | -0.1 | 4.6 | 0.2 | -2.7 | 3.4 |
| Savings deposits | 0.6 | 0.4 | 2.7 | 2.0 | 1.8 |
| Fixed deposits | 2.0 | 1.3 | 1.1 | 2.2 | 2.2 |
| Others | -0.2 | 0.5 | 1.5 | 6.4 | -0.9 |
| Total | 1.3 | 1.6 | 1.4 | 1.4 | 2.2 |
| Grand Total | 1.3 | 1.6 | 1.1 | 1.4 | 2.2 |

Chart 12: Deposits in KHR Classified by Type, as of May 2024

(Share of Total KHR Deposits)

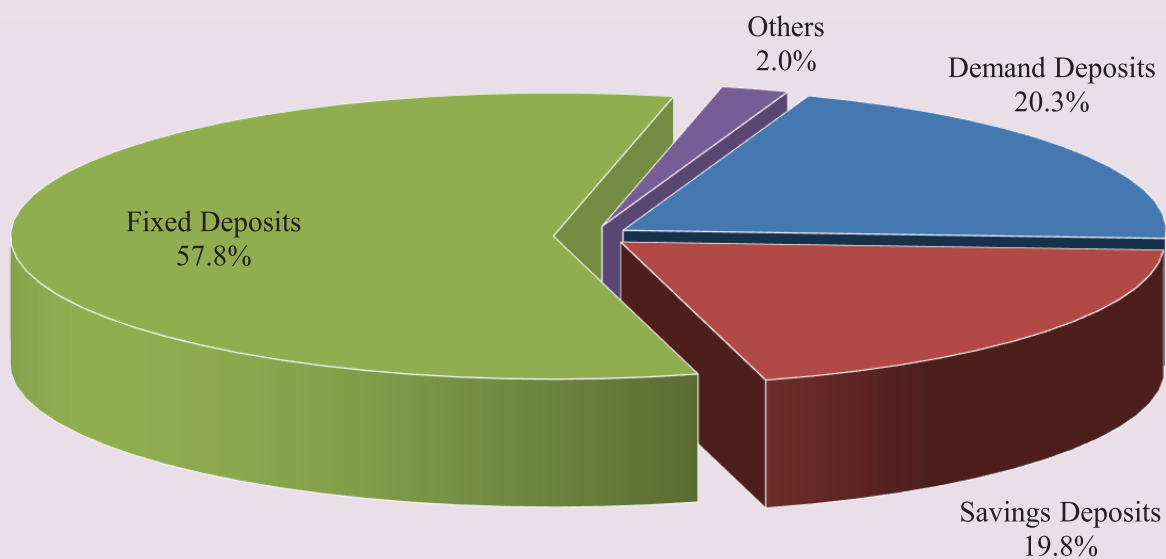


Chart 13: Deposits in Foreign Currency Classified by Type, as of May 2024

(Share of Total Foreign Currency Deposits)

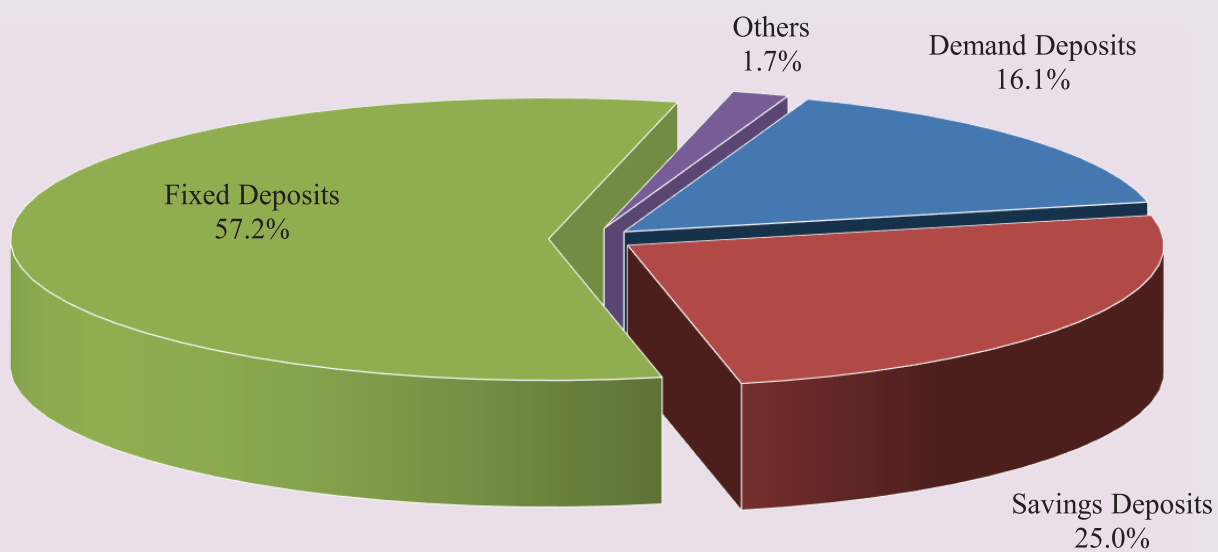


Table 20: Credit Granted by Micro-Finance Institutions*

| Period | Numbers of | | | | Loan Outstanding (In Billion KHR) | Interest Rate | |
|---------------|---------------------|--------------------|---------------|-----------------------|--------------------------------------|---------------|-------------|
| | District | Commune | Village | Household | | Monthly | Annually |
| Dec-14 | 2,754 | 18,254 | 107,964 | 1,844,893 | 8,340 | 2% - 3% | 27%-39% |
| Dec-15 | 4,576 | 27,510 | 141,514 | 2,149,180 | 12,365 | 2% - 4% | 25%-41% |
| Dec-16 | 5,971 | 32,599 | 155,499 | 2,129,907 | 12,954 | 2% - 4% | 25%-41% |
| 2017* | | | | | | | |
| | Numbers of Branches | | | Number of Borrowers** | Loan Outstanding (In Billion KHR) | Interest Rate | |
| | Head Office | Province/ Krong | District/Khan | | | Monthly | Annually |
| Dec-17 | 76 | 366 | 975 | 1,776,467 | 17,236 | 1.4%-2.5% | 16.9%-28.8% |
| Dec-18 | 80 | 399 | 944 | 1,872,916 | 21,813 | 1.2%-2.0% | 15.1%-24.0% |
| Dec-19 | 82 | 406 | 965 | 2,109,170 | 29,357 | 1.1%-1.6% | 13.4%-18.7% |
| Dec-20 | 79 | 343 | 749 | 1,919,926 | 27,527 | 1.1%-1.6% | 13.4%-18.3% |
| Dec-21 | 77 | 325 | 664 | 1,897,878 | 31,723 | 1.1%-1.5% | 13.3%-17.6% |
| 2022 | | | | | | | |
| Jun | 85 | 336 | 671 | 2,027,069 | 35,730 | 1.1%-1.4% | 12.9%-17.3% |
| Jul | 85 | 337 | 672 | 2,046,509 | 36,477 | 1.1%-1.4% | 13.1%-17.3% |
| Aug | 85 | 339 | 678 | 2,070,163 | 37,189 | 1.1%-1.4% | 13.2%-17.3% |
| Sep | 85 | 340 | 678 | 2,093,002 | 37,725 | 1.1%-1.4% | 13.0%-17.3% |
| Oct | 86 | 340 | 678 | 2,111,552 | 38,374 | 1.1%-1.5% | 13.1%-17.4% |
| Nov | 86 | 340 | 678 | 2,121,312 | 38,761 | 1.1%-1.4% | 13.0%-17.3% |
| Dec | 86 | 343 | 679 | 2,129,150 | 38,932 | 1.1%-1.4% | 13.0%-17.3% |
| 2023 | | | | | | | |
| Jan | 87 | 342 | 676 | 2,138,432 | 39,335 | 1.1%-1.5% | 13.1%-17.9% |
| Feb | 87 | 342 | 676 | 2,149,437 | 39,255 | 1.0%-1.5% | 12.1%-17.9% |
| Mar | 87 | 346 | 678 | 2,164,707 | 39,684 | 1.0%-1.5% | 12.1%-17.9% |
| Apr | 87 | 346 | 683 | 2,169,008 | 40,068 | 1.0%-1.5% | 12.1%-17.9% |
| May | 87 | 358 | 674 | 2,179,962 | 40,022 | 1.0%-1.5% | 11.6%-17.9% |
| Jun | 87 | 362 | 672 | 2,185,693 | 40,198 | 1.0%-1.5% | 11.5%-17.9% |
| Jul | 87 | 362 | 671 | 2,188,142 | 40,269 | 0.9%-1.5% | 10.2%-18.1% |
| Aug | 87 | 359 | 652 | 2,163,738 | 40,710 | 0.8%-1.5% | 10.2%-18.3% |
| Sep | 86 | 310 | 517 | 1,625,506 | 21,240 | 1.0%-1.5% | 12.2%-18.1% |
| Oct | 87 | 309 | 518 | 1,627,775 | 21,299 | 1.0%-1.5% | 12.1%-18.1% |
| Nov | 87 | 308 | 517 | 1,626,914 | 21,182 | 1.0%-1.5% | 12.1%-18.1% |
| Dec | 87 | 310 | 515 | 1,620,818 | 21,036 | 1.0%-1.5% | 12.1%-18.1% |
| 2024 | | | | | | | |
| Jan | 87 | 311 | 516 | 1,619,022 | 21,086 | 1.0%-1.5% | 12.1%-18.1% |
| Feb | 87 | 310 | 514 | 1,617,466 | 21,065 | 1.0%-1.5% | 12.1%-18.1% |
| Mar | 87 | 308 | 513 | 1,614,548 | 20,973 | 1.0%-1.5% | 11.9%-18.1% |
| Apr | 87 | 310 | 516 | 1,606,045 | 20,975 | 1.0%-1.5% | 12.1%-18.1% |
| May | 87 | 309 | 515 | 1,606,776 | 21,076 | 1.0%-1.5% | 12.1%-18.1% |

* Including MFI and MDI

** Including Individuals and Legal Entities

*** Revised Data

Table 21: KHR-Denominated Checks Clearing through Clearing House

| Date | Number of Cleared Check | Number of Working Day | Number of Cleared Check Per Day | Total Amount (In Billion KHR) | Daily Average Amount (In Billion KHR) | Returned Check | |
|--------------|-------------------------|-----------------------|---------------------------------|----------------------------------|--|----------------|----------------------------|
| | | | | | | Number | Amount (In Billion KHR) |
| | 1 | 2 | 3 = 1/2 | 4 | 5 = 4/2 | 6 | 7 |
| Dec-16 | 3,938 | 22 | 179 | 490.0 | 22.3 | 13 | 3.15 |
| Total | 82,291 | 242 | 340 | 5,421.8 | 22.4 | 186 | 117.50 |
| Dec-17 | 3,074 | 20 | 154 | 599.0 | 30.0 | 22 | 12.48 |
| Total | 37,485 | 239 | 1,885 | 6,607.8 | 27.6 | 138 | 28.51 |
| Dec-18 | 2,994 | 19 | 158 | 935.1 | 49.2 | 16 | 6.58 |
| Total | 38,249 | 232 | 165 | 9,424.1 | 40.6 | 197 | 152.90 |
| Dec-19 | 3,734 | 21 | 178 | 1,584.1 | 75.4 | 18 | 11.33 |
| Total | 41,696 | 236 | 177 | 13,602.7 | 57.6 | 206 | 630.84 |
| Dec-20 | 3,264 | 23 | 142 | 1,839.6 | 80.0 | 5 | 0.57 |
| Total | 35,570 | 240 | 148 | 22,955.3 | 95.6 | 101 | 5,074.92 |
| Dec-21 | 3,028 | 23 | 132 | 1,763.0 | 76.7 | 14 | 26.86 |
| Total | 31,749 | 242 | 131 | 19,089.4 | 78.9 | 99 | 466.43 |
| 2022 | | | | | | | |
| Jul | 2,726 | 21 | 130 | 1,448.2 | 69.0 | 5 | 0.30 |
| Aug | 2,996 | 23 | 130 | 1,758.5 | 76.5 | 3 | 0.13 |
| Sep | 2,654 | 21 | 126 | 1,421.7 | 67.7 | 6 | 12.03 |
| Oct | 2,771 | 21 | 132 | 1,776.9 | 84.6 | 7 | 1.48 |
| Nov | 2,721 | 19 | 143 | 1,791.4 | 94.3 | 2 | 0.03 |
| Dec | 3,106 | 22 | 141 | 1,898.0 | 86.3 | 8 | 1.79 |
| Total | 33,608 | 251 | 134 | 19,831.3 | 79.0 | 68 | 88.91 |
| 2023 | | | | | | | |
| Jan | 2,683 | 22 | 122 | 1,693.0 | 77.0 | 6 | 22.70 |
| Feb | 2,775 | 20 | 139 | 1,780.5 | 89.0 | 5 | 0.50 |
| Mar | 3,141 | 22 | 143 | 2,588.0 | 117.6 | 20 | 16.40 |
| Apr | 2,680 | 19 | 141 | 1,785.5 | 94.0 | 7 | 0.40 |
| May | 2,832 | 20 | 142 | 1,749.9 | 87.5 | 16 | 11.80 |
| Jun | 2,991 | 22 | 136 | 1,880.9 | 85.5 | 6 | 0.10 |
| Jul | 2,578 | 20 | 129 | 1,421.8 | 71.1 | 9 | 10.36 |
| Aug | 3,112 | 23 | 135 | 1,791.1 | 77.9 | 14 | 1.90 |
| Sep | 2,793 | 21 | 133 | 1,730.6 | 82.4 | 9 | 1.55 |
| Oct | 2,792 | 21 | 133 | 1,682.6 | 80.1 | 22 | 9.83 |
| Nov | 2,553 | 19 | 134 | 1,665.6 | 87.7 | 26 | 1.80 |
| Dec | 3,179 | 21 | 151 | 2,233.3 | 106.3 | 14 | 56.82 |
| Total | 34,109 | 250 | 136 | 22,002.8 | 88.0 | 154 | 134.16 |
| 2024 | | | | | | | |
| Jan | 2,706 | 22 | 123 | 1,867.4 | 84.9 | 6 | 5.83 |
| Feb | 2,859 | 21 | 136 | 1,410.9 | 67.2 | 8 | 3.51 |
| Mar | 2,822 | 20 | 144 | 2,019.4 | 101.0 | 8 | 1.60 |
| Apr | 2,718 | 20 | 136 | 1,750.6 | 87.5 | 14 | 93.25 |
| May | 2,773 | 20 | 139 | 1,745.9 | 87.3 | 11 | 3.27 |
| Total | 13,878 | 103 | 135 | 8,794.2 | 85.4 | 47 | 107.46 |

Table 22: USD-Denominated Checks Clearing through Clearing House

| Date | Number of Checks Cleared | Number of days Cleared | Number of Cleared Check per Day | Total Amount (In Million USD) | Daily Average Amount (In Million USD) | Returned Checks | |
|--------------|--------------------------|------------------------|---------------------------------|-------------------------------|---------------------------------------|-----------------|--------------------|
| | | | | | | Number | Amount |
| | | | | | | 6 | 7 (In Million USD) |
| | 1 | 2 | 3 = 1/2 | 4 | 5 = 4/2 | | |
| Dec-16 | 92,820 | 22 | 4,219 | 2,220.4 | 100.9 | 778 | 44.8 |
| Total | 1,025,209 | 242 | 4,236 | 21,790.4 | 90.0 | 8,738 | 439.6 |
| Dec-17 | 101,093 | 20 | 5,055 | 2,824.6 | 141.2 | 789 | 37.6 |
| Total | 1,107,752 | 239 | 4,635 | 26,812.7 | 112.2 | 8,863 | 440.4 |
| Dec-18 | 111,978 | 19 | 5,894 | 3,917.1 | 206.2 | 904 | 63.6 |
| Total | 1,238,232 | 232 | 5,337 | 41,462.7 | 178.7 | 10,474 | 2,686.1 |
| Dec-19 | 121,353 | 21 | 5,779 | 4,448.5 | 211.8 | 964 | 87.1 |
| Total | 1,337,800 | 236 | 5,669 | 51,609.1 | 218.7 | 10,654 | 3,779.9 |
| Dec-20 | 111,749 | 23 | 4,859 | 4,369.7 | 190.0 | 714 | 45.0 |
| Total | 1,200,110 | 240 | 5,000 | 50,220.0 | 209.3 | 8,620 | 8,737.8 |
| Dec-21 | 104,666 | 23 | 4,551 | 5,002.1 | 217.5 | 672 | 65.5 |
| Total | 1,077,104 | 242 | 4,451 | 46,380.6 | 191.7 | 8,423 | 517.9 |
| 2022 | | | | | | | |
| Jul | 92,323 | 21 | 4,396 | 4,874.0 | 232.1 | 643 | 47.6 |
| Aug | 100,482 | 23 | 4,369 | 4,507.6 | 196.0 | 771 | 64.5 |
| Sep | 87,331 | 21 | 4,159 | 4,301.1 | 204.8 | 705 | 73.3 |
| Oct | 89,781 | 21 | 4,275 | 5,054.4 | 240.7 | 779 | 1,076.3 |
| Nov | 86,441 | 19 | 4,550 | 3,771.7 | 198.5 | 864 | 71.5 |
| Dec | 97,561 | 22 | 4,435 | 4,152.9 | 188.8 | 948 | 78.7 |
| Total | 1,105,712 | 251 | 4,405 | 53,853.9 | 214.6 | 8,739 | 1,764.0 |
| 2023 | | | | | | | |
| Jan | 85,292 | 22 | 3,877 | 3,749.7 | 170.4 | 886 | 103.8 |
| Feb | 81,623 | 20 | 4,081 | 3,644.1 | 182.2 | 941 | 83.9 |
| Mar | 97,101 | 22 | 4,414 | 4,207.1 | 191.2 | 1,045 | 79.3 |
| Apr | 78,164 | 19 | 4,114 | 3,471.0 | 182.7 | 861 | 66.2 |
| May | 94,501 | 20 | 4,725 | 3,836.8 | 191.8 | 1,054 | 86.9 |
| Jun | 89,627 | 22 | 4,074 | 3,911.5 | 177.8 | 958 | 78.2 |
| Jul | 84,307 | 20 | 4,215 | 3,600.8 | 180.0 | 1,018 | 62.8 |
| Aug | 91,909 | 23 | 3,996 | 3,755.6 | 163.3 | 1,059 | 74.0 |
| Sep | 83,733 | 21 | 3,987 | 3,399.1 | 161.9 | 963 | 52.6 |
| Oct | 84,135 | 21 | 4,006 | 3,327.6 | 158.5 | 920 | 55.9 |
| Nov | 80,278 | 19 | 4,225 | 3,245.3 | 170.8 | 935 | 78.6 |
| Dec | 91,040 | 21 | 4,335 | 4,284.5 | 204.0 | 957 | 58.5 |
| Total | 1,041,710 | 250 | 4,167 | 44,433.1 | 177.7 | 11,597 | 880.6 |
| 2024 | | | | | | | |
| Jan | 89,845 | 22 | 4,084 | 3,929.3 | 178.6 | 907 | 205.6 |
| Feb | 79,161 | 21 | 3,770 | 3,504.7 | 166.9 | 865 | 49.7 |
| Mar | 83,061 | 20 | 4,153 | 3,939.2 | 197.0 | 795 | 60.1 |
| Apr | 83,184 | 20 | 4,159 | 3,731.5 | 186.6 | 847 | 56.5 |
| May | 87,578 | 20 | 4,379 | 4,040.0 | 202.0 | 989 | 70.2 |
| Total | 422,829 | 103 | 4,105 | 19,144.7 | 185.9 | 4,403 | 442.1 |

Table 23: Visitor Arrivals in Cambodia

| | 2024 | | | % of Total | | % Change | |
|--|----------------|----------------|----------------|--------------|--------------|--------------|-------------|
| | Mar | Apr | May | Apr | May | Apr/Mar | May/Apr |
| (Mode of Arrival) | | | | | | | |
| Phnom Penh International Airport | 156,015 | 138,376 | 129,367 | 25.9 | 24.7 | -11.3 | -6.5 |
| Kong Keng International Airport | 1,011 | 1,274 | 1,123 | 0.2 | 0.2 | 26.0 | -11.9 |
| Siem Reap International Airport | 64,845 | 43,594 | 30,988 | 8.2 | 5.9 | -32.8 | -28.9 |
| Land | 362,488 | 344,404 | 359,991 | 64.5 | 68.6 | -5.0 | 4.5 |
| Boat | 9,744 | 6,284 | 2,921 | 1.2 | 0.6 | -35.5 | -53.5 |
| Preah Vihea | 0 | 0 | 0 | 0.0 | 0.0 | 0.0 | 0.0 |
| Total | 594,103 | 533,932 | 524,390 | 100.0 | 100.0 | -10.1 | -1.8 |
| (Arrival by Purpose of Visit) | | | | | | | |
| Tourist | 453,656 | 402,884 | 403,892 | 75.5 | 77.0 | -11.2 | 0.3 |
| Business and Professional | 129,538 | 118,452 | 111,155 | 22.2 | 21.2 | -8.6 | -6.2 |
| Others and not specified | 10,909 | 12,596 | 9,343 | 2.4 | 1.8 | 15.5 | -25.8 |
| Total | 594,103 | 533,932 | 524,390 | 100.0 | 100.0 | -10.1 | -1.8 |
| (Top-Ten Countries of Passenger Arrivals) | | | | | | | |
| Thailand | 172,251 | 168,531 | 182,059 | 31.6 | 34.7 | -2.2 | 8.0 |
| Vietnam | 114,006 | 114,975 | 113,886 | 21.5 | 21.7 | 0.8 | -0.9 |
| China (PRC) | 79,971 | 70,494 | 65,548 | 13.2 | 12.5 | -11.9 | -7.0 |
| Lao PDR | 35,625 | 27,554 | 36,295 | 5.2 | 6.9 | -22.7 | 31.7 |
| Indonesia | 14,605 | 14,725 | 15,032 | 2.8 | 2.9 | 0.8 | 2.1 |
| United States of America | 21,378 | 16,110 | 12,754 | 3.0 | 2.4 | -24.6 | -20.8 |
| South Korea | 14,022 | 11,963 | 10,632 | 2.2 | 2.0 | -14.7 | -11.1 |
| Malaysia | 7,270 | 7,698 | 7,823 | 1.4 | 1.5 | 5.9 | 1.6 |
| United Kingdom | 14,363 | 10,442 | 7,081 | 2.0 | 1.4 | -27.3 | -32.2 |
| Japan | 12,280 | 7,219 | 7,050 | 1.4 | 1.3 | -41.2 | -2.3 |
| Others | 108,332 | 84,221 | 66,230 | 15.8 | 12.6 | -22.3 | -21.4 |
| Total | 594,103 | 533,932 | 524,390 | 100.0 | 100.0 | -10.1 | -1.8 |

Source: Ministry of Tourism

** Increased in times, not in percentage (%).*

Table 24: Cambodia's Imports and Exports

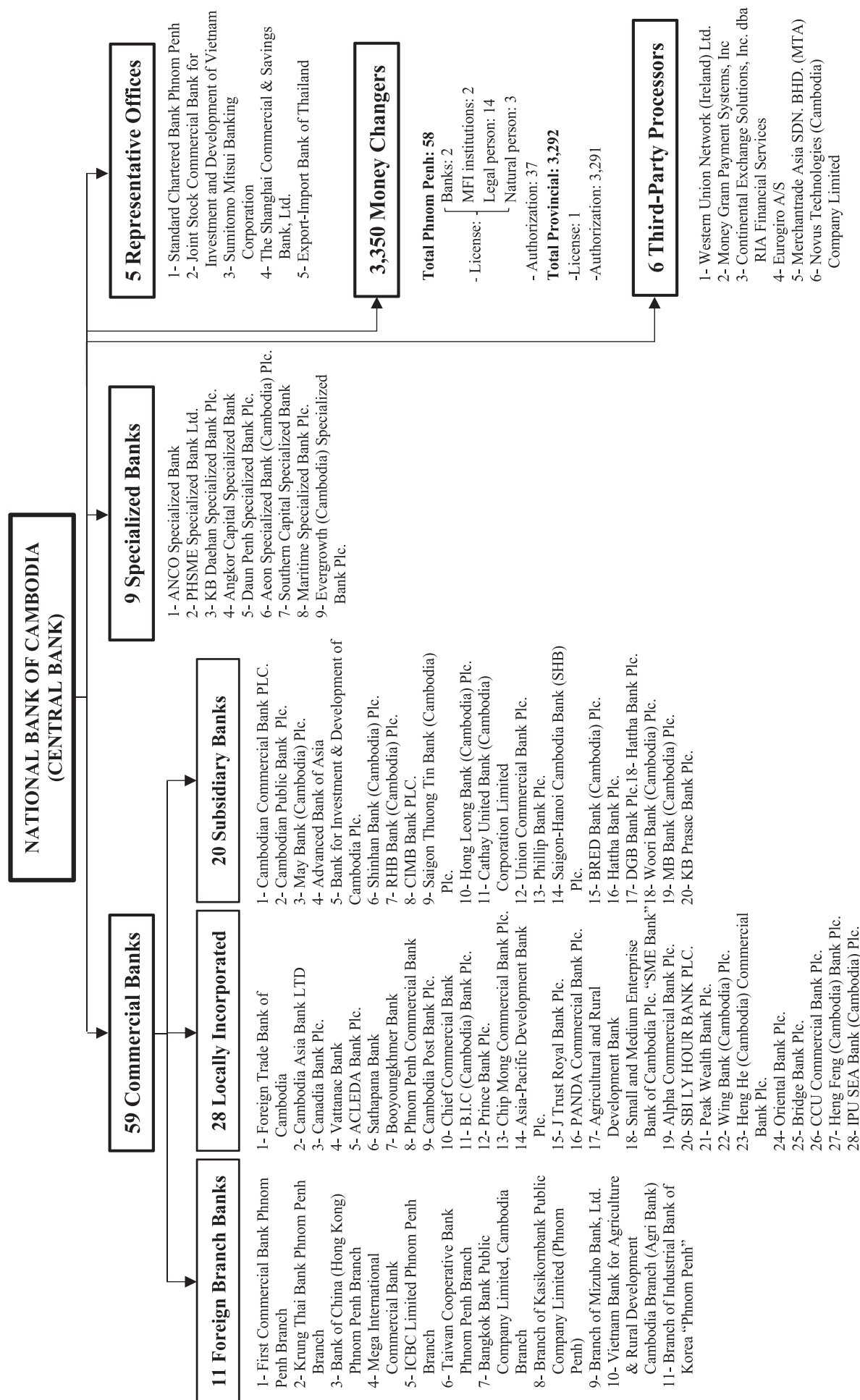
(In Billion KHR)

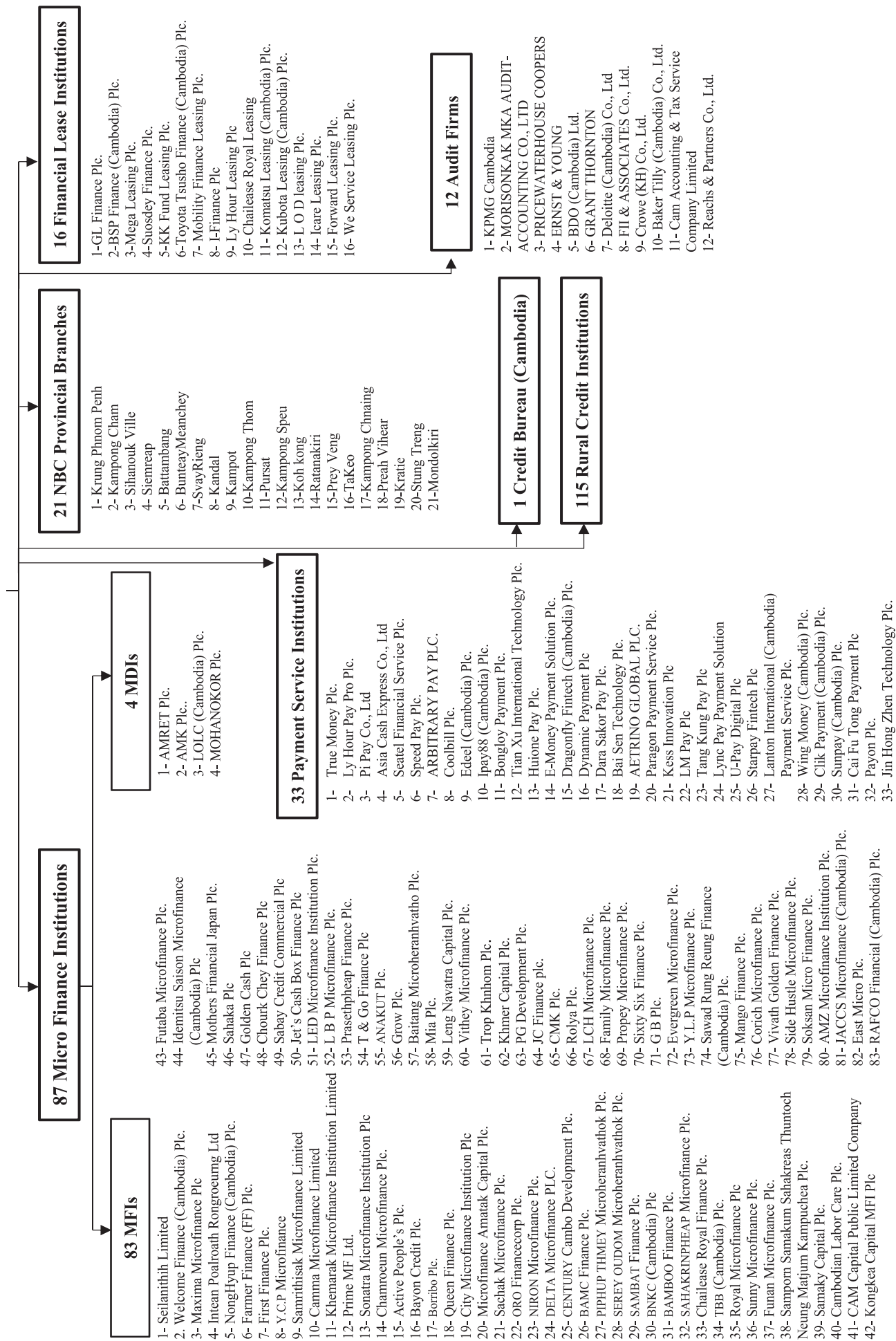
| | 2024 | | | Change in Billion KHR | | Change in % | |
|--------------------------------------|----------------|----------------|-----------------|-----------------------|----------------|--------------|-------------|
| | Mar | Apr | May | Apr/Mar | May/Apr | Apr/Mar | May/Apr |
| Imports by Commodity | | | | | | | |
| Medicine | 85.9 | 104.3 | 86.1 | 18.4 | -18.3 | 21.4 | -17.5 |
| Cigarette | 72.0 | 44.2 | 85.4 | -27.7 | 41.2 | -38.5 | 93.1 |
| Food and Beverage | 438.5 | 430.1 | 421.3 | -8.4 | -8.8 | -1.9 | -2.0 |
| Equipment Construction | 307.9 | 357.8 | 385.0 | 50.0 | 27.1 | 16.2 | 7.6 |
| Cement | 6.7 | 4.8 | 5.6 | -1.8 | 0.7 | -27.5 | 15.0 |
| Steel | 153.4 | 178.6 | 286.0 | 25.1 | 107.4 | 16.4 | 60.2 |
| Phones | 12.0 | 9.5 | 4.5 | -2.4 | -5.0 | -20.3 | -52.9 |
| T.V | 4.0 | 2.6 | 1.7 | -1.4 | -0.9 | -34.1 | -35.0 |
| Other Electronic Equipment | 109.8 | 105.8 | 112.2 | -4.0 | 6.4 | -3.6 | 6.0 |
| Garment | 198.7 | 254.3 | 242.5 | 55.6 | -11.8 | 28.0 | -4.7 |
| Fabric | 1,462.6 | 2,027.1 | 2,435.3 | 564.6 | 408.2 | 38.6 | 20.1 |
| Vehicle | 507.5 | 444.6 | 507.2 | -62.9 | 62.6 | -12.4 | 14.1 |
| Equipment of Cold | 23.0 | 25.7 | 34.5 | 2.7 | 8.9 | 11.8 | 34.6 |
| Gold | 53.7 | 33.9 | 0.0 | -19.7 | -33.9 | -36.8 | -100.0 |
| Oil | 1,165.5 | 1,567.2 | 1,385.8 | 401.7 | -181.4 | 34.5 | -11.6 |
| Fertilizer | 57.5 | 80.5 | 93.5 | 23.0 | 13.0 | 39.9 | 16.1 |
| Others | 3,909.1 | 4,209.8 | 4,522.3 | 300.7 | 312.5 | 7.7 | 7.4 |
| Total Imports | 8,567.5 | 9,880.9 | 10,608.7 | 1,313.4 | 727.8 | 15.3 | 7.4 |
| Exports by Commodity | | | | | | | |
| Garment | 2,757.2 | 2,211.5 | 3,390.8 | -545.6 | 1,179.2 | -19.8 | 53.3 |
| Footwear | 491.2 | 434.7 | 658.6 | -56.5 | 223.9 | -11.5 | 51.5 |
| Other Textile Product | 868.3 | 681.0 | 866.9 | -187.3 | 185.9 | -21.6 | 27.3 |
| Electrical Part | 439.3 | 492.8 | 532.3 | 53.5 | 39.5 | 12.2 | 8.0 |
| Vehicle and Bicycle Part | 91.8 | 78.9 | 91.0 | -12.9 | 12.0 | -14.1 | 15.3 |
| Bicycle | 151.5 | 141.0 | 153.4 | -10.5 | 12.4 | -6.9 | 8.8 |
| Wood Products | 174.8 | 158.2 | 178.5 | -16.6 | 20.4 | -9.5 | 12.9 |
| Rice | 278.1 | 217.8 | 141.7 | -60.3 | -76.1 | -21.7 | -34.9 |
| Rubber | 105.8 | 98.0 | 136.3 | -7.8 | 38.3 | -7.4 | 39.1 |
| Fish and Other Agricultural Products | 2,412.7 | 1,202.3 | 486.1 | -1,210.4 | -716.2 | -50.2 | -59.6 |
| Others | 1,511.1 | 1,443.5 | 1,916.7 | -67.6 | 473.3 | -4.5 | 32.8 |
| Total Exports | 9,281.7 | 7,159.8 | 8,552.4 | -2,121.9 | 1,392.6 | -22.9 | 19.5 |

*Source: General Department of Cambodia Customs and Excise*** Increased in times, not in percentage (%).**** Revised Data*

Table 25: THE BANKING SYSTEM IN CAMBODIA

As of 31 May 2024





អ៊ីនធឺណែត

INTERNET

: www.nbc.gov.kh គឺជាគេហទំព័ររបស់ធនាគារជាតិនៃកម្ពុជា។ ទិន្នន័យថ្មីៗក្នុងគេហទំព័រ និង ទិន្នន័យបន្តបន្ទាប់ទៀត ត្រូវបាននិងកំពុងដាក់បញ្ចូលទៅក្នុងប្រព័ន្ធទិន្នន័យ តាមធនធានដែលមាន។ លើសពីនេះទៀត គេហទំព័រនេះ គឺជាទីតាំងដ៏ល្អបំផុតដើម្បីទទួលបានទិន្នន័យសង្ខេបនៃការចេញផ្សាយចុងក្រោយបង្អស់។

www.nbc.gov.kh is the National Bank of Cambodia website. The website new data and metadata are progressively being added to the database, as resources permit. This website is the best place to start for access to summary data from the latest publications.

សេវាព័ត៌មាន

INFORMATION SERVICE

: បុគ្គលិករបស់នាយកដ្ឋានស្ថិតិ នៃធនាគារជាតិនៃកម្ពុជា អាចជួយចង្អុលបង្ហាញ ឬណែនាំអ្នកប្រើប្រាស់ក្នុងការស្វែងរកទិន្នន័យតាមតម្រូវការ។ ការបោះពុម្ពផ្សាយរបស់ធនាគារជាតិនៃកម្ពុជា អាចរកជាវបាន ហើយសេវាលើការជាវជាប្រចាំក៏អាចរៀបចំបានដែរ។ ចំពោះសេវាលើទិន្នន័យពិសេសផ្សេងទៀតក៏អាចរកបានផងដែរ តាមរយៈការមកជាវព្រឹត្តិបត្រដោយផ្ទាល់។

The Statistics Department staff of the National Bank of Cambodia can assist users in addressing their data requirements. The National Bank of Cambodia publications are available for sale and subscription services can be arranged. Other special data services are also available, on a user pays basis.

អាសយដ្ឋានទំនាក់ទំនង

CONTACT DETAILS

ធនាគារជាតិនៃកម្ពុជា

NATIONAL BANK OF CAMBODIA

នាយកដ្ឋានស្ថិតិ

Statistics Department

អគារលេខ ៦៩-៧០ មហាវិថីហាណូយ (លេខ១០១៩) ភូមិបាយ៉ាប សង្កាត់ភ្នំពេញថ្មី

ខណ្ឌសែនសុខ រាជធានីភ្នំពេញ

#69-70, Hanoi Blvd. (1019), Phum Bayab, Sangkat Phnom Penh Thmei,

Khan Sen Sok, Phnom Penh

អ៊ីម៉ែល : statistics@nbc.gov.kh

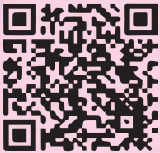
E-mail : statistics@nbc.gov.kh

ទូរស័ព្ទ : (៨៥៥) ២៣ ៧២២ ៥៦៣ – ១១១៥

Telephone : (855) 23 722 563 – 1115

ទូរសារ : (៨៥៥) ២៣ ៤២៦ ១១៧

Facsimile : (855) 23 426 117



ISSN 2074-5680

ផលិតដោយ ធនាគារជាតិនៃកម្ពុជា

Produced by the National Bank of Cambodia